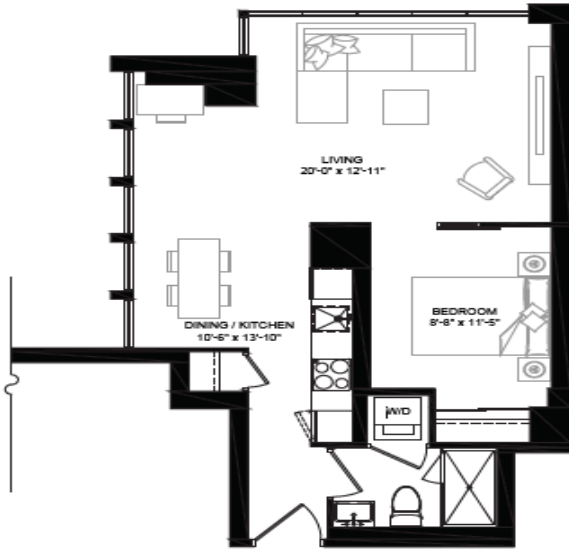
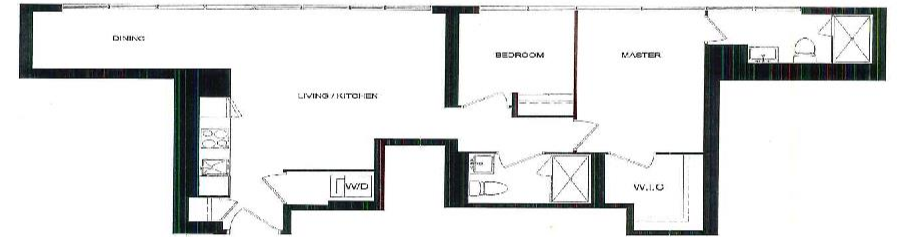


CROSSTOWN III Floor Plan

1F



SUITE 2506
UNIT TYPE 2M



1 BEDROOM, 1 BATH
SUITE: 634 SQ. FT.



Designs are not to scale. Materials, specifications & floor plans are subject to change without notice. All dimensions are shown in feet and inches. All areas and listed room dimensions are approximate. Actual results may vary slightly from those shown. Floor area measured in accordance with National Association of Realtors (NAR) 2012 S.F.®. Utility area and configurations may vary depending on floor level location.

SUITE AREA: 800 SQ. FT.
LEGAL LEVEL: 24

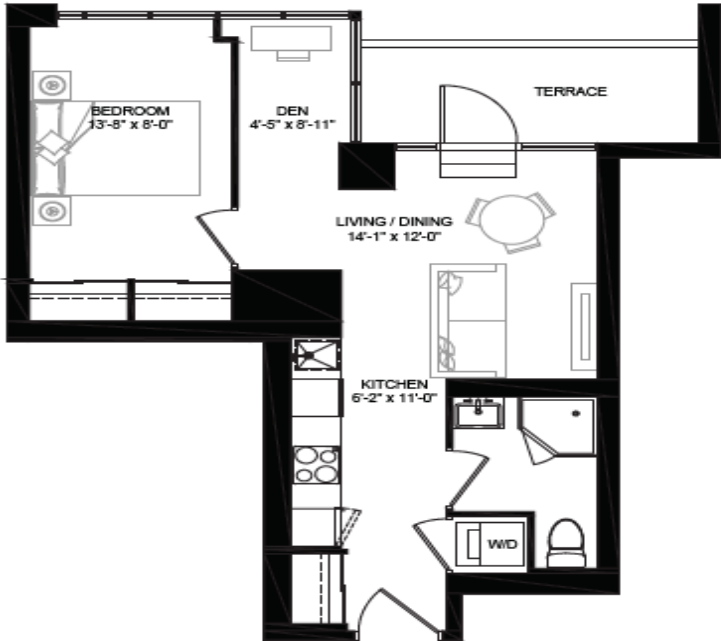


FLOOR 25

ISSUE DATE: 17 SEPTEMBER 2020

CROSSTOWN III Floor Plan

1A-D

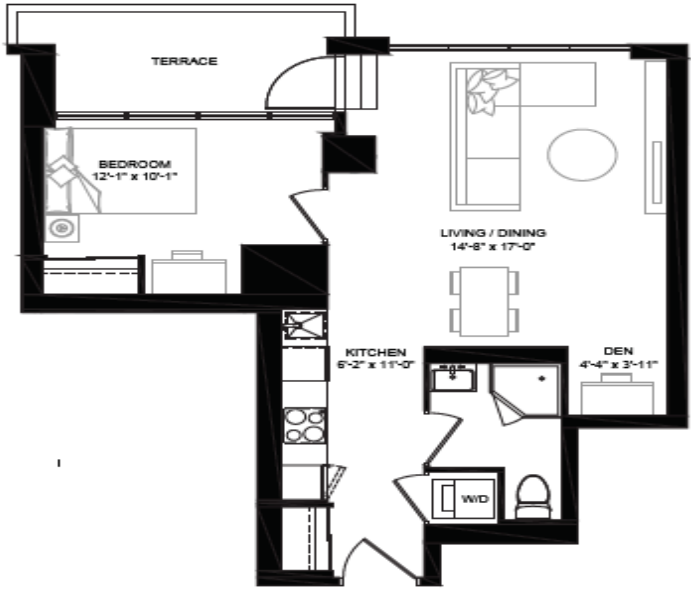


1 BEDROOM + DEN, 1 BATH
 SUITE: 551 SQ.FT.
 TERRACE: 66 SQ.FT.



Drawings are not to scale. Materials, specifications & floor plans are subject to change without notice. All measurements are within roomlines. All areas and related room dimensions are approximate. Actual results may vary from the stated floor area. Floor area measured in accordance with Texas Property Code Chapter 88, § 88.001. Delivery area and configurations may differ depending on floor level location.

1B-D



1 BEDROOM + DEN, 1 BATH
 SUITE: 619 SQ.FT.
 TERRACE: 74 SQ.FT.



Drawings are not to scale. Materials, specifications & floor plans are subject to change without notice. All measurements are within roomlines. All areas and related room dimensions are approximate. Actual results may vary from the stated floor area. Floor area measured in accordance with Texas Property Code Chapter 88, § 88.001. Delivery area and configurations may differ depending on floor level location.