

# THE TWELVE HUNDRED

OSSINGTON/DUNDAS

## PLATINUM PROMOTIONS

Parking: ~~\$90,000~~ \$80,000 (2 Bedrooms and 2 Baths or 3 Bedrooms only)

### Units under \$750,000 Deposit Structure

- \$5,000 on signing
- Balance to 5% in 30 days
- 2.5% on September 15, 2021
- 2.5% on January 15, 2022
- 2.5% on July 15, 2022
- 2.5% on October 15, 2022
- 2.5% on July 15, 2023
- 2.5% on October 15, 2023

### Units over \$750,000 Deposit Structure

- \$5,000 on signing
- Balance to 5% in 30 days
- 2.5% on September 15, 2021
- 2.5% on January 15, 2022
- 2.5% on July 15, 2022
- 2.5% on October 15, 2022
- 5% on Occupancy

Right to lease in Occupancy

### Reduced Assignment

- ~~\$5,000~~ \$500 admin fee + \$750 legal fee

Capped Levies



FIELD  
GATE  
URBAN

# THE TWELVE HUNDRED

## OSSINGTON/DUNDAS

### BUILDING FEATURES

- Eight storey boutique building with a brick-styled precast exterior, retail at grade
- Virtual concierge
- Fitness centre with cardio equipment and free weights
- Bicycle storage rooms
- Ground floor complete with wet bar and fireplace
- Parcel locker room
- Rooftop private conference rooms
- Rooftop indoor party room with fireplace and lounge seating
- Rooftop outdoor amenity with lounge seating and BBQ station
- Two elevators accessible from parking garage to top floor
- "Ignite Gigabit" high speed internet provided by way of a discount bulk agreement with Rogers

### SUITE FEATURES

- Smooth finish ceilings throughout painted flat white
- Suite designs featuring approximately 8'6" high ceiling (excluding bulkheads and drop ceilings)
- Wide plank laminate flooring throughout entry, kitchen, dining, living areas and bedrooms from Vendor's standard samples
- Closets equipped with hangar rods and vinyl coated wire shelving
- Painted contemporary baseboards and door casing
- Interior walls are primed and painted off-white quality latex paint
- Terraces feature one exterior water bib connection
- Individual suite metering of hydro consumption
- Energy efficient building boilers for heating and domestic hot water

### KITCHEN FEATURES

- Soft close kitchen cabinetry from Vendor's standard samples
- Track lighting
- Quartz kitchen countertop from Vendor's standard samples
- Combination quartz slab and tile backsplash from Vendor's standard samples
- Stainless steel under-mount sink with black faucet and pull down sprayer

### KITCHEN APPLIANCES

- 24" paneled refrigerator with bottom freezer
- 24" electric cooktop
- 24" built in electric oven
- 24" paneled dishwasher
- Microwave
- Built-in hood-fan, concealed in cabinetry

### BATHROOMS

- Cabinetry from Vendor's standard samples
- White quartz countertop from Vendor's standard samples
- White porcelain undermount vanity sink
- White soaker tub, as per plan, with full wall height tile surround, from Vendor's standard samples
- Frameless glass shower door for bathrooms with 5' free standing showers, as per plan
- Low-flow toilet and faucets
- Privacy lock on all bathrooms
- Vanity mirror and wall scone

### LIGHTING, ELECTRICAL & HVAC SYSTEMS

- Ceiling mounted light fixtures in foyer, den, and bedroom(s)
- One capped ceiling outlet in dining area as per plan
- Cable receptacle in living room, den, bedroom(s) and as per plan
- Cable wiring to accommodate telephone cable and data (services are not included)

### LAUNDRY

- In-suite laundry, front-loading stackable washer and ventless dryer
- White ceramic floor tile in laundry areas

Suite Type	Size Range	Starting From
Jr. 1 Bedroom	343 to 425	Low \$500's
1 Bedroom	441 to 546	Low \$600's
1 Bedroom + Den	490 to 567	High \$600's
2 Bedroom + 1 Bath	577 to 633	Low \$700's
2 Bedroom + 2 Baths	628 to 684	High \$700's
3 Bedroom	740 to 896	Low \$900's

<p><b><u>Maintenance Fees</u></b> \$0.69/sf Including Virtual Concierge, Common areas, Garbage Removal, Snow Removal, Landscaping, Amenities &amp; Building insurance.</p> <p>Excluding Hydro (electricity), water, heating &amp; cooling.</p> <p>"Ignite Gigabit" high speed internet provided by way of a discount bulk agreement with Rogers at \$25+HST</p> <p>Parking Maintenance Fee: \$60/month</p>	<p><b><u>Standard Deposit Structure</u></b></p> <p>\$5,000 with offer</p> <p>Balance to 5% in 30 days</p> <p>5% in 120 days</p> <p>5% in 360 days</p> <p>5% in 450 days</p> <p>5% on Occupancy</p>	<p><b><u>Parking</u></b> \$90,000</p> <p><b><u>Occupancy Date</u></b> January 2, 2024</p> <p><b><u>Property Taxes</u></b> See City Posted Rates</p>
--	--	---

# THE TWELVE HUNDRED

OSSINGTON/DUNDAS

## SUITE INFORMATION: SALES OFFICE USE ONLY

SUITE # \_\_\_\_\_

UNIT PRICE \$ \_\_\_\_\_

PARKING \$ \_\_\_\_\_

TOTAL PRICE \$ \_\_\_\_\_

Parking Waitlist? (Y/N)  Yes  No

Manager Signature: \_\_\_\_\_

Worksheet Date	_____
Appointment Date	_____

Model Type	_____
Price Range	_____
Notes: _____ _____ _____	

## PURCHASER ONE INFORMATION:

All fields are mandatory.

First Name: \_\_\_\_\_

Last Name: \_\_\_\_\_

Address: \_\_\_\_\_  
\_\_\_\_\_

City: \_\_\_\_\_

Province: \_\_\_\_\_

Country: \_\_\_\_\_

Postal Code: \_\_\_\_\_

Phone #: \_\_\_\_\_

Email: \_\_\_\_\_

Date of Birth (MM/DD/YY): \_\_\_\_\_

Government-Issued Photo ID #: \_\_\_\_\_

Expiry Date: \_\_\_\_\_

SIN #: \_\_\_\_\_

Profession: \_\_\_\_\_

Company: \_\_\_\_\_

End-User  Investor  Endvestor

## PURCHASER TWO INFORMATION:

All fields are mandatory.

First Name: \_\_\_\_\_

Last Name: \_\_\_\_\_

Address: \_\_\_\_\_  
\_\_\_\_\_

City: \_\_\_\_\_

Province: \_\_\_\_\_

Country: \_\_\_\_\_

Postal Code: \_\_\_\_\_

Phone #: \_\_\_\_\_

Email: \_\_\_\_\_

Date of Birth (MM/DD/YY): \_\_\_\_\_

Government-Issued Photo ID #: \_\_\_\_\_

Expiry Date: \_\_\_\_\_

SIN #: \_\_\_\_\_

Profession: \_\_\_\_\_

Company: \_\_\_\_\_

End-User  Investor  Endvestor

Payable to MINDEN GROSS LLP, IN TRUST

## Broker Information:

Fill in details or staple business card.

Name: \_\_\_\_\_

Brokerage: \_\_\_\_\_

Email: \_\_\_\_\_

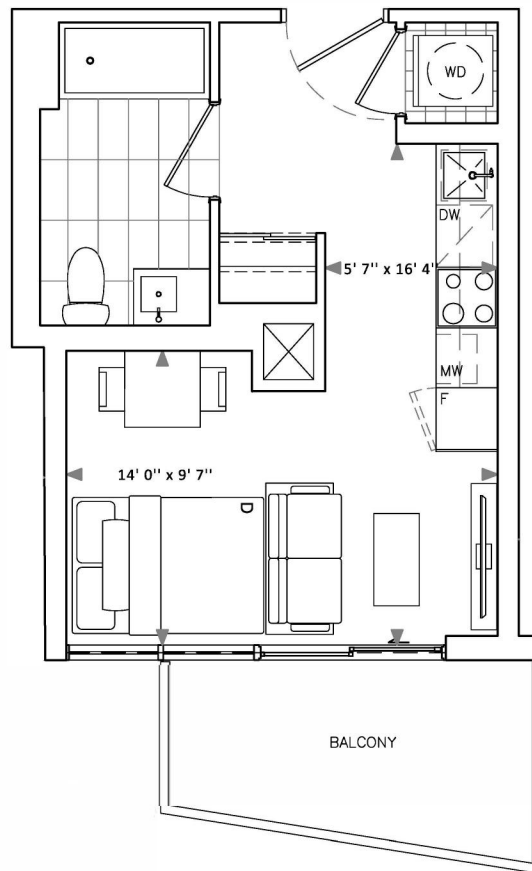
Phone #: \_\_\_\_\_

NOTES

\_\_\_\_\_  
\_\_\_\_\_  
\_\_\_\_\_

Interior: 321 Sq Ft Exterior: 74 Sq Ft

Total: 395 Sq Ft



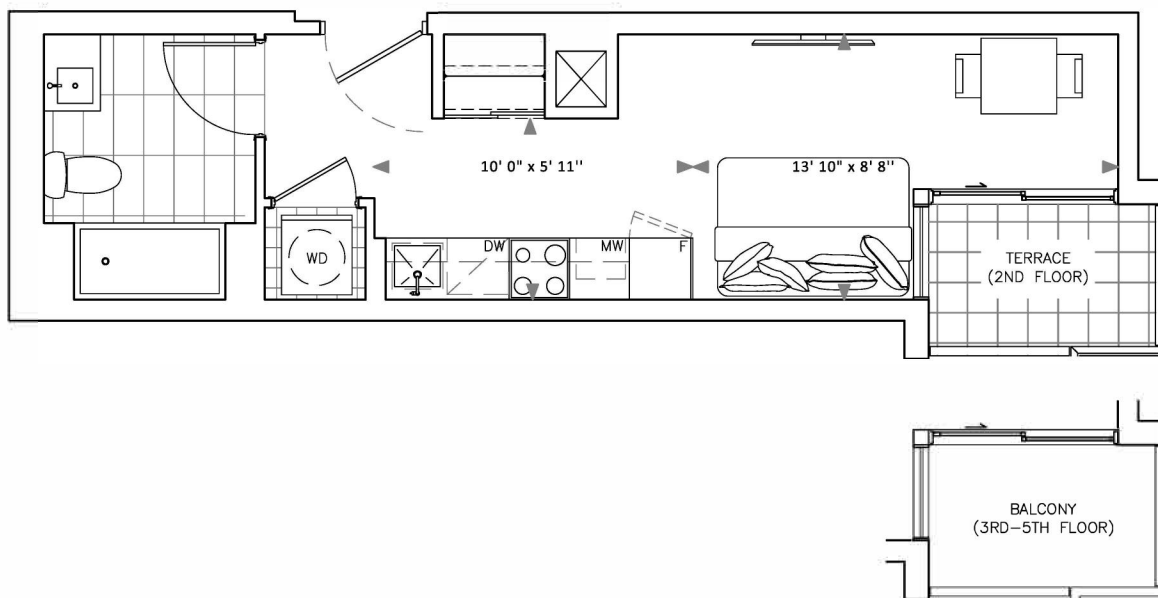


Interior: 324 Sq Ft Exterior (terr.): 37 Sq Ft

**Total: 361 Sq Ft**

Exterior (balc.): 37 Sq Ft

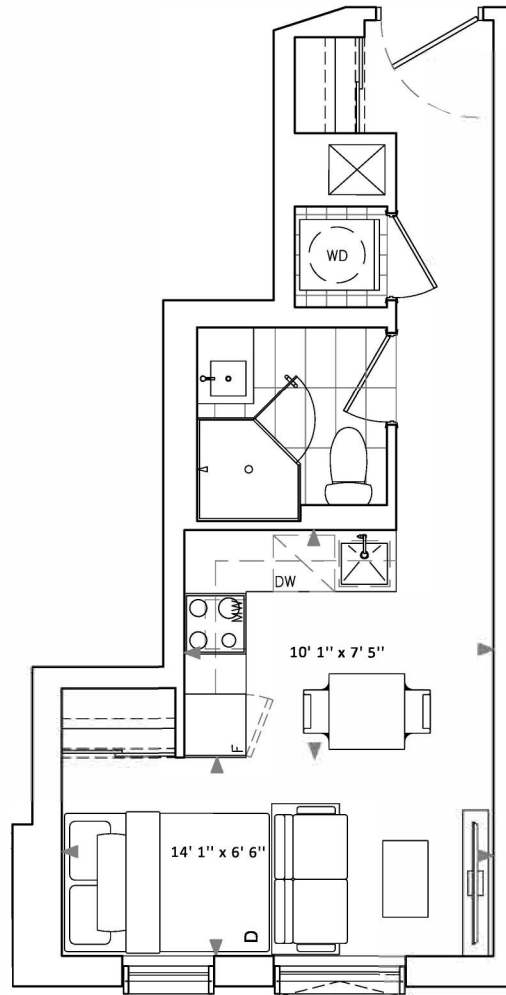
**Total: 361 Sq Ft**



Interior: 356 Sq Ft

Exterior: 0 Sq Ft

Total: 356 Sq Ft



# THE TWELVE HUNDRED

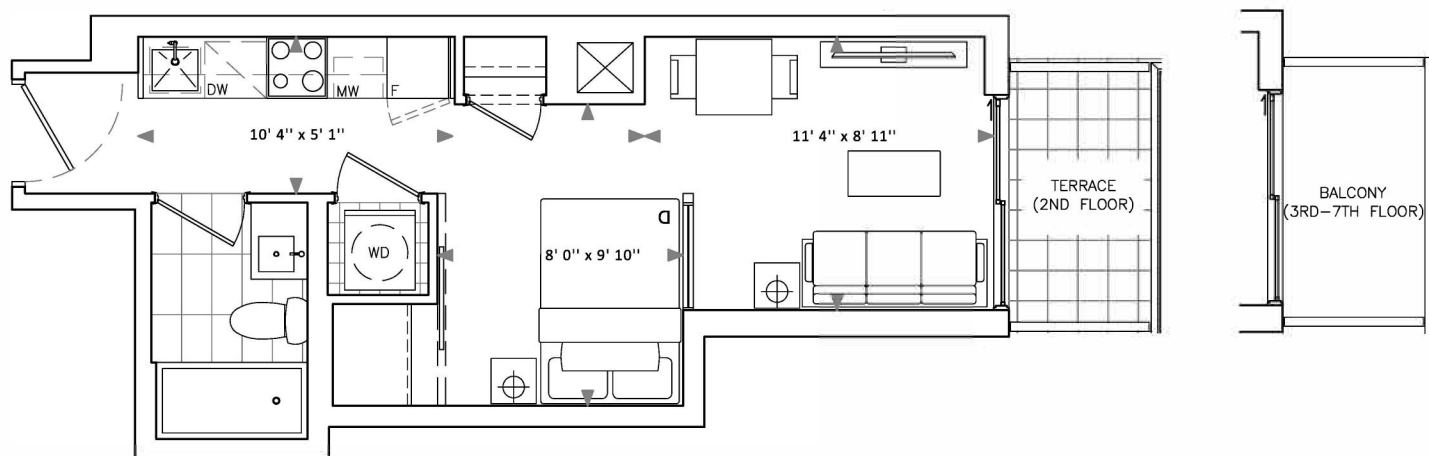
# A7

Interior: 359 Sq Ft    Exterior (terr.): 40 Sq Ft

**Total: 399 Sq Ft**

Exterior (balc.): 40 Sq Ft

**Total: 399 Sq Ft**



Fieldgate  
Urban

[TheTwelveHundred.com](http://TheTwelveHundred.com)

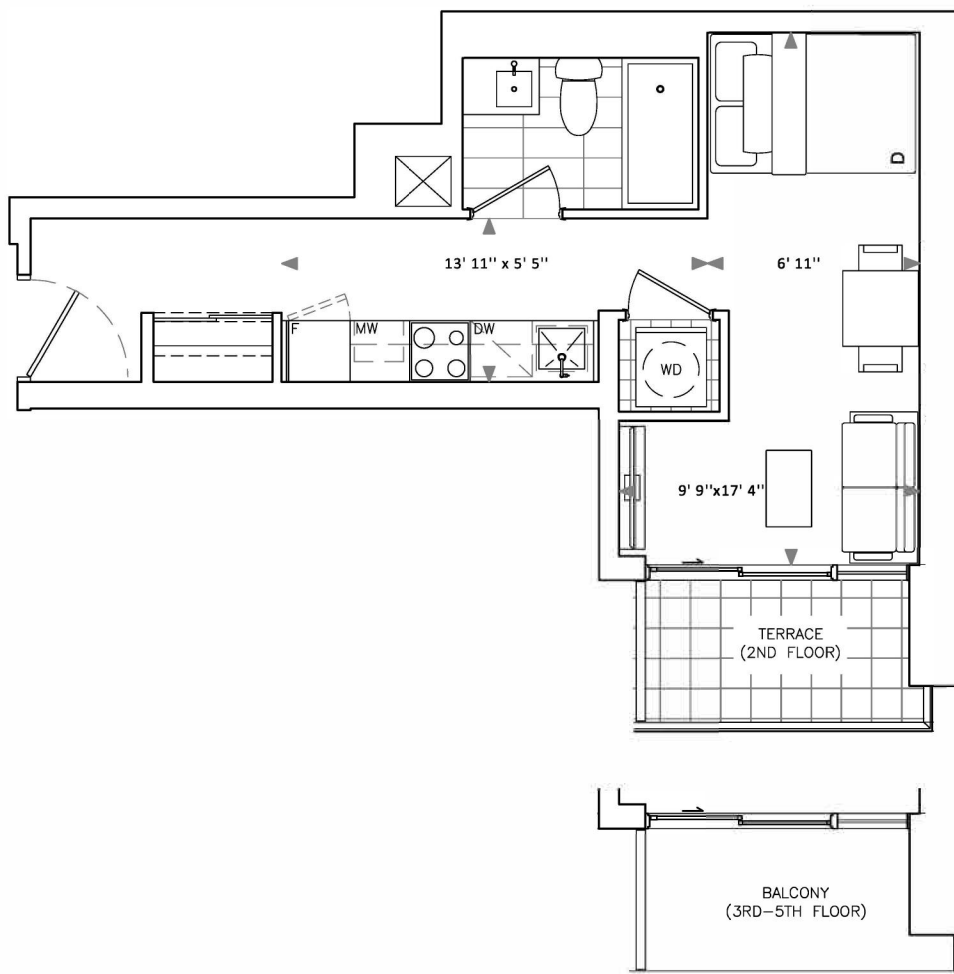
Dimensions, specifications, layouts and materials are approximate only and are subject to change without notice. Window sizes and locations may vary. Furniture is for illustration purposes only and does not necessarily reflect the electrical plan for the suite. Suites are sold unfurnished. Actual useable floor space within the unit may be different from stated floor areas or dimensions on this plan. For more information on the method used for calculating the floor area of any unit, please refer to Builder Bulletin No. 22 published by Tarion. Balcony and terrace area is approximate and not included in net suite area. The actual unit purchased may be a reverse layout to the plan shown. E.&O.E.

Interior: 366 Sq Ft    Exterior (terr.): 46 Sq Ft

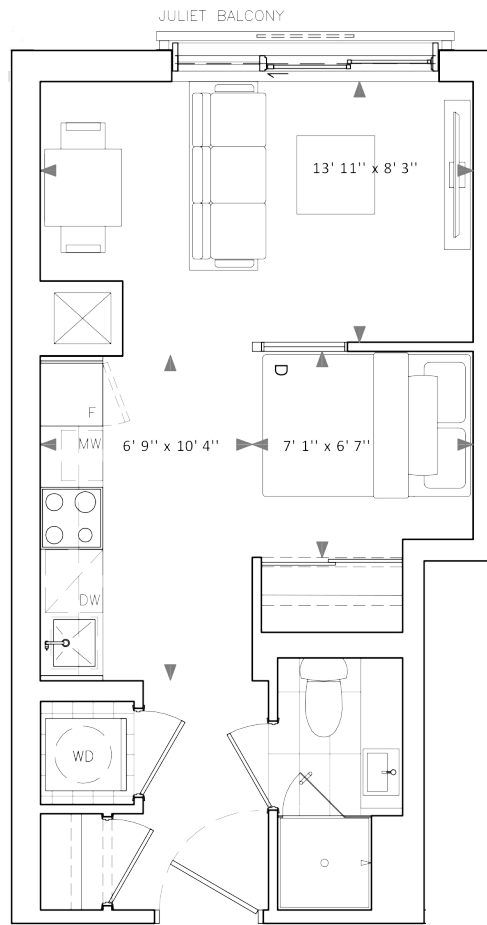
**Total: 412 Sq Ft**

Exterior (balc.): 51 Sq Ft

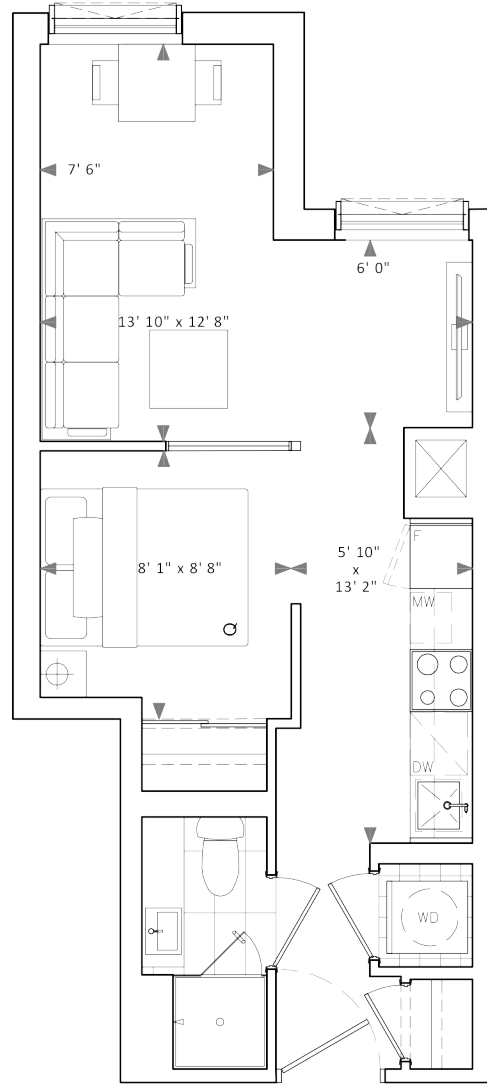
**Total: 417 Sq Ft**



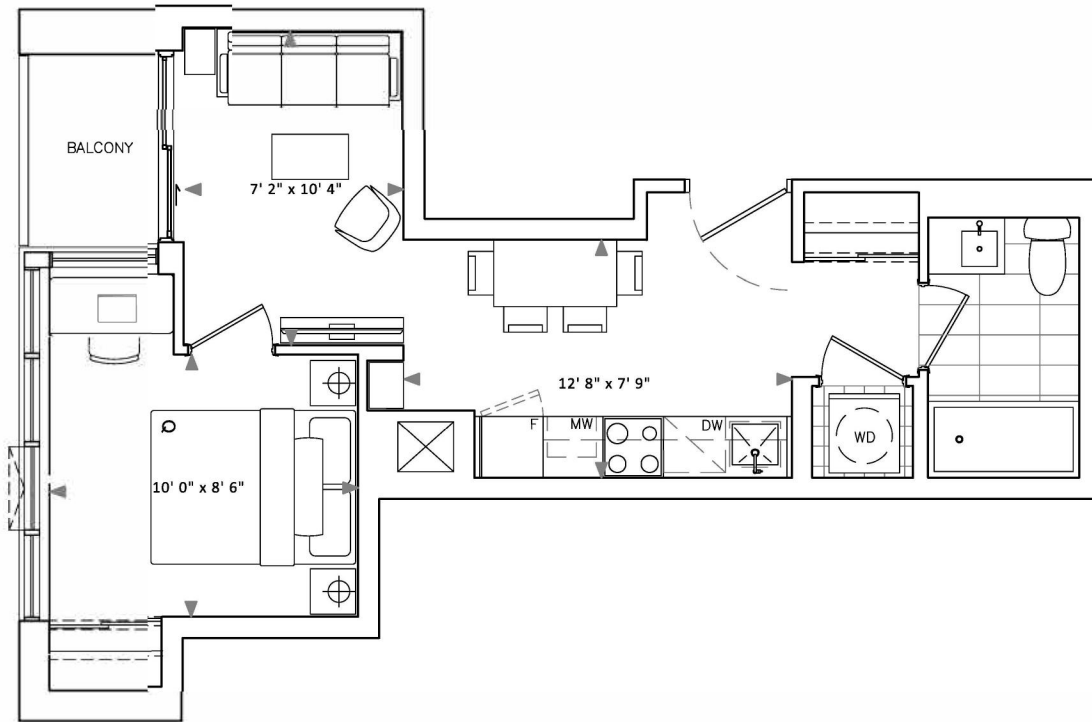
Interior: 383 Sq Ft    Exterior: 0 Sq Ft  
**Total: 383 Sq Ft**



Interior: 425 Sq Ft    Exterior: 0 Sq Ft  
Total: 425 Sq Ft



Interior: 441 Sq Ft    Exterior: 28 Sq Ft  
Total: 469 Sq Ft



# THE TWELVE HUNDRED

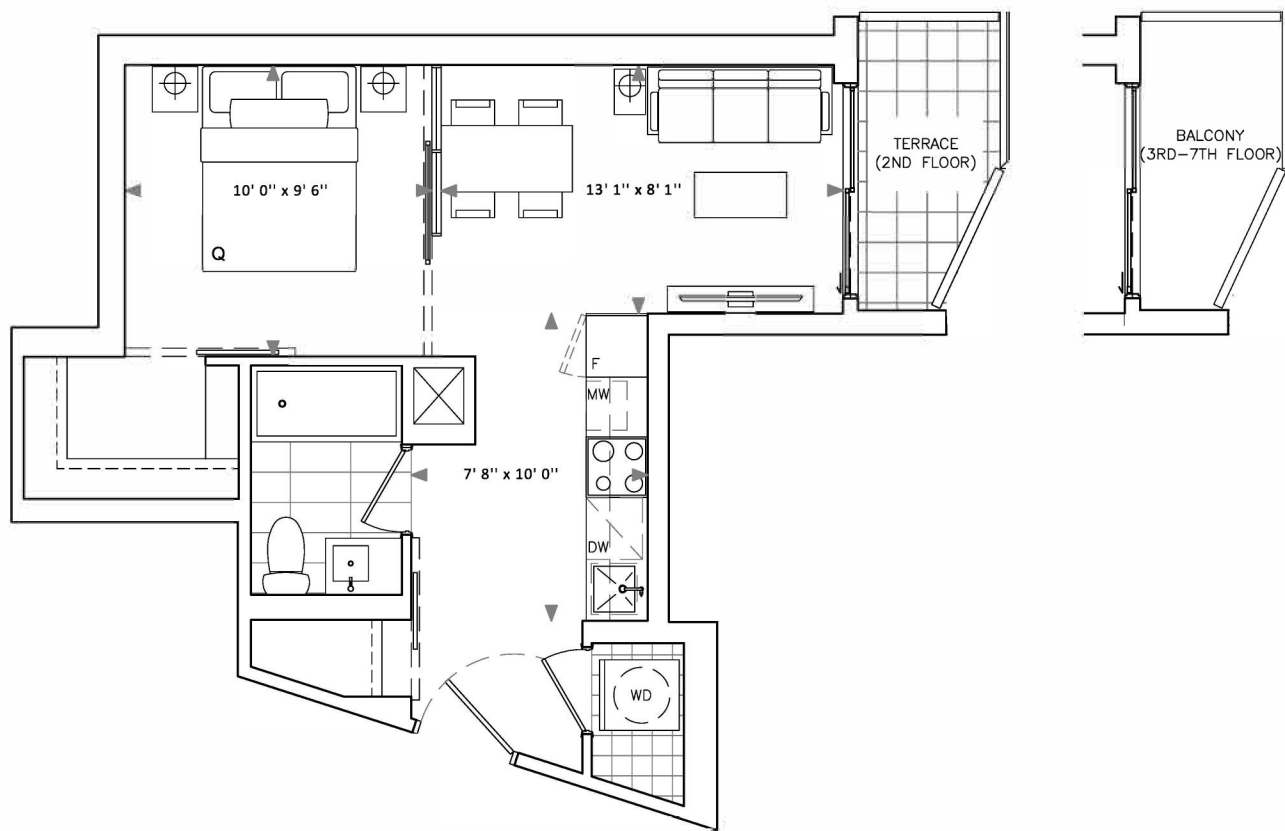
# B4

Interior: 465 Sq Ft    Exterior (terr.): 40 Sq Ft

**Total: 505 Sq Ft**

Exterior (balc.): 40 Sq Ft

**Total: 505 Sq Ft**

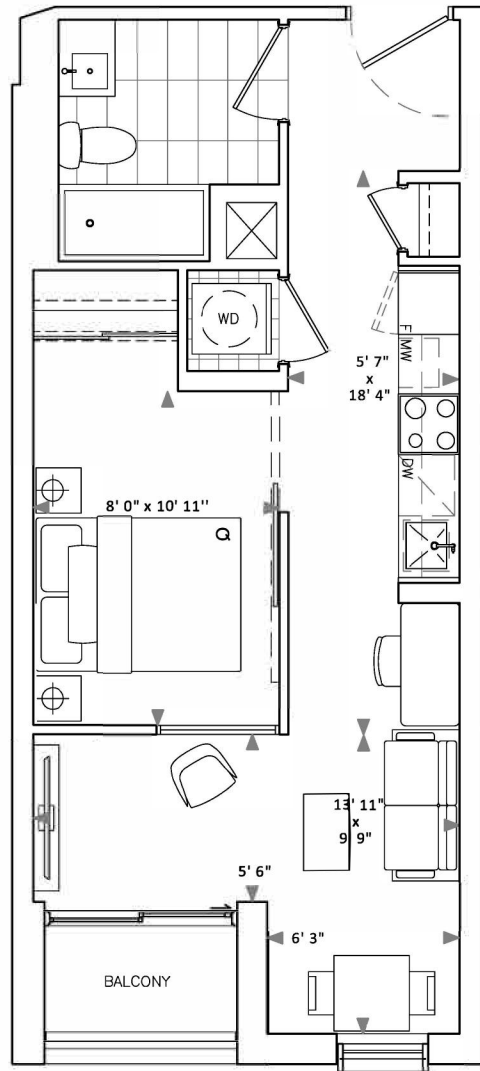


Fieldgate  
Urban

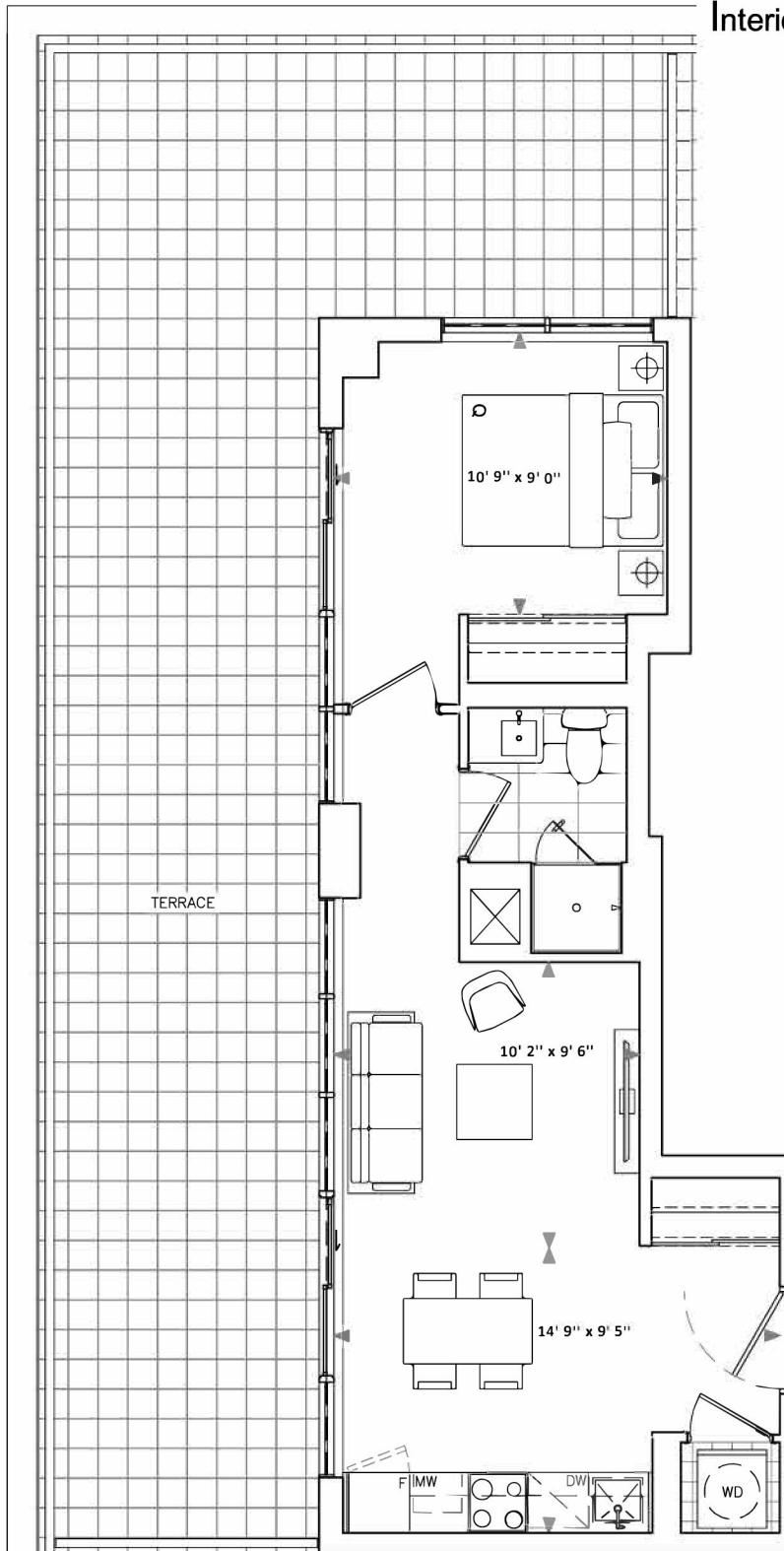
[TheTwelveHundred.com](http://TheTwelveHundred.com)

Dimensions, specifications, layouts and materials are approximate only and are subject to change without notice. Window sizes and locations may vary. Furniture is for illustration purposes only and does not necessarily reflect the electrical plan for the suite. Suites are sold unfurnished. Actual useable floor space within the unit may be different from stated floor areas or dimensions on this plan. For more information on the method used for calculating the floor area of any unit, please refer to Builder Bulletin No. 22 published by Tarion. Balcony and terrace area is approximate and not included in net suite area. The actual unit purchased may be a reverse layout to the plan shown. E.&O.E.





Interior: 525 Sq Ft    Exterior: 570 Sq Ft  
Total: 1095 Sq Ft



# THE TWELVE HUNDRED

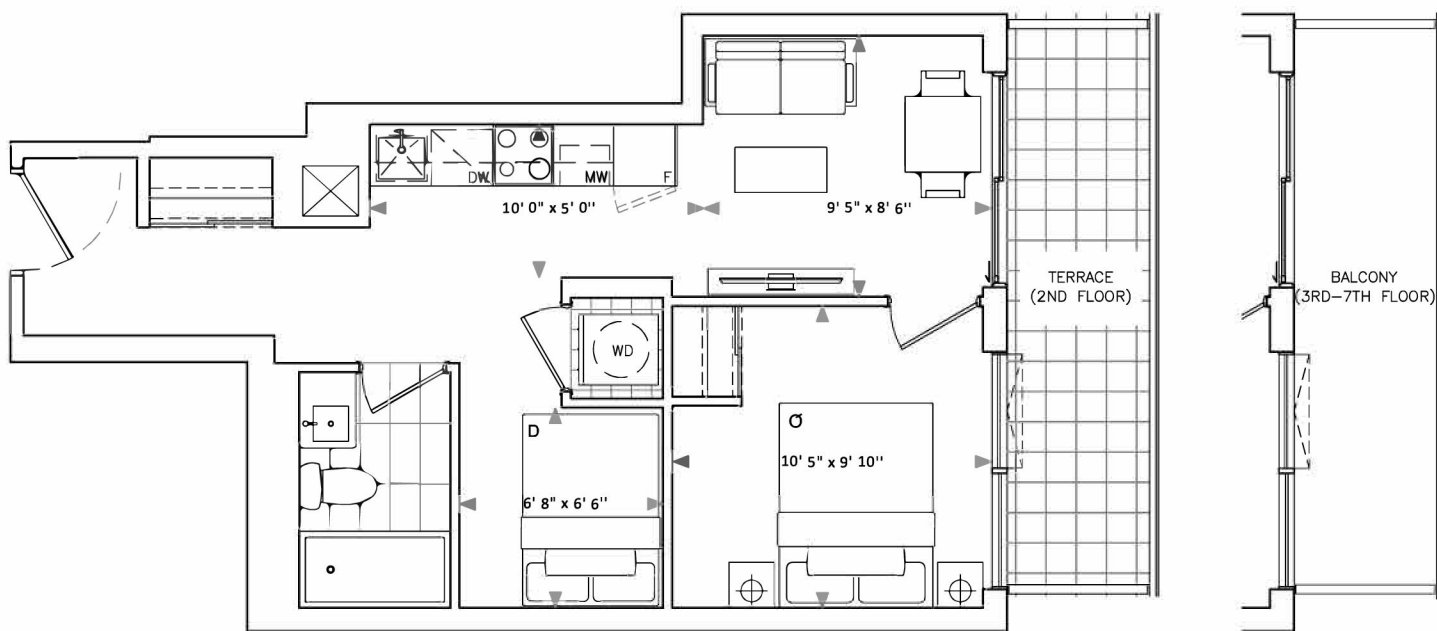
# C1

Interior: 490 Sq Ft    Exterior (terr.): 90 Sq Ft

**Total: 580 Sq Ft**

Exterior (balc.): 90 Sq Ft

**Total: 580 Sq Ft**



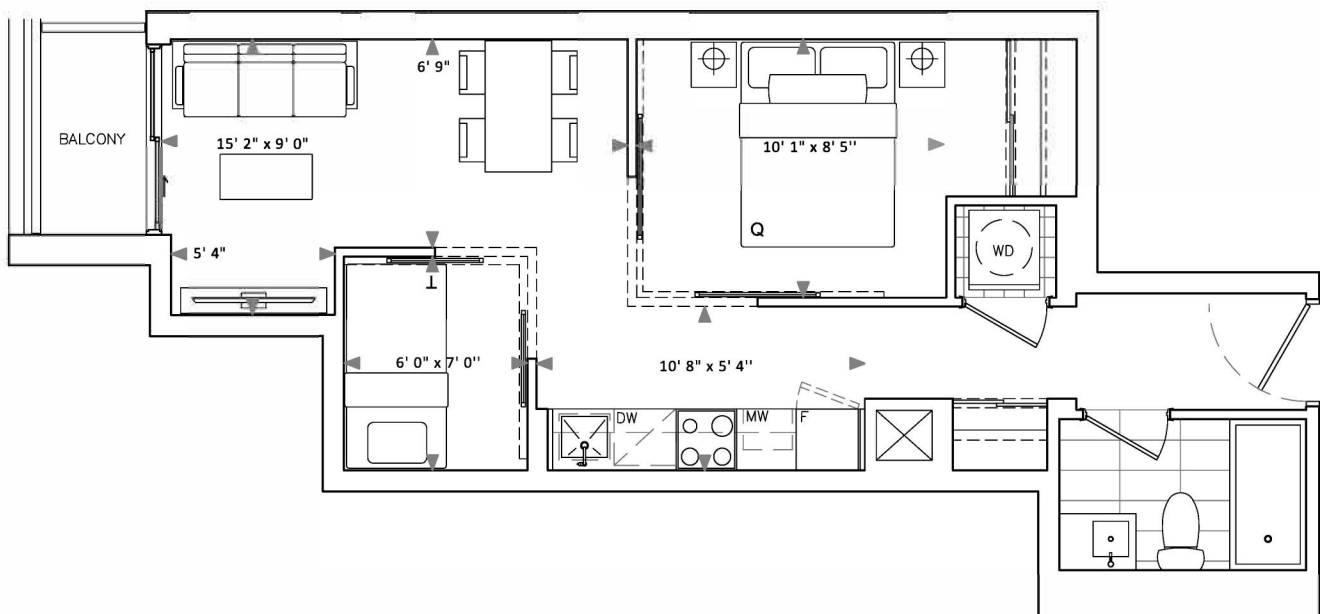
Fieldgate  
Urban

[TheTwelveHundred.com](http://TheTwelveHundred.com)

Dimensions, specifications, layouts and materials are approximate only and are subject to change without notice. Window sizes and locations may vary. Furniture is for illustration purposes only and does not necessarily reflect the electrical plan for the suite. Suites are sold unfurnished. Actual useable floor space within the unit may be different from stated floor areas or dimensions on this plan. For more information on the method used for calculating the floor area of any unit, please refer to Builder Bulletin No. 22 published by Tarion. Balcony and terrace area is approximate and not included in net suite area. The actual unit purchased may be a reverse layout to the plan shown. E.&O.E.

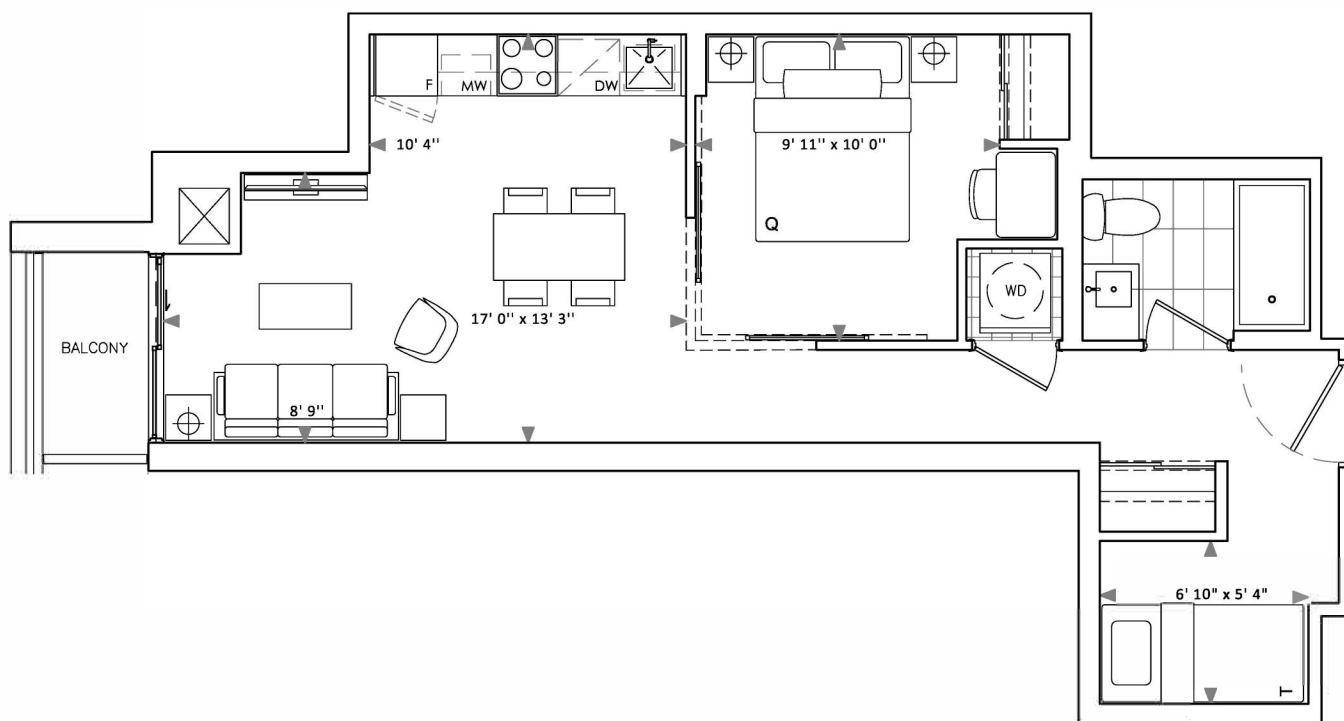
Interior: 505 Sq Ft    Exterior: 26 Sq Ft

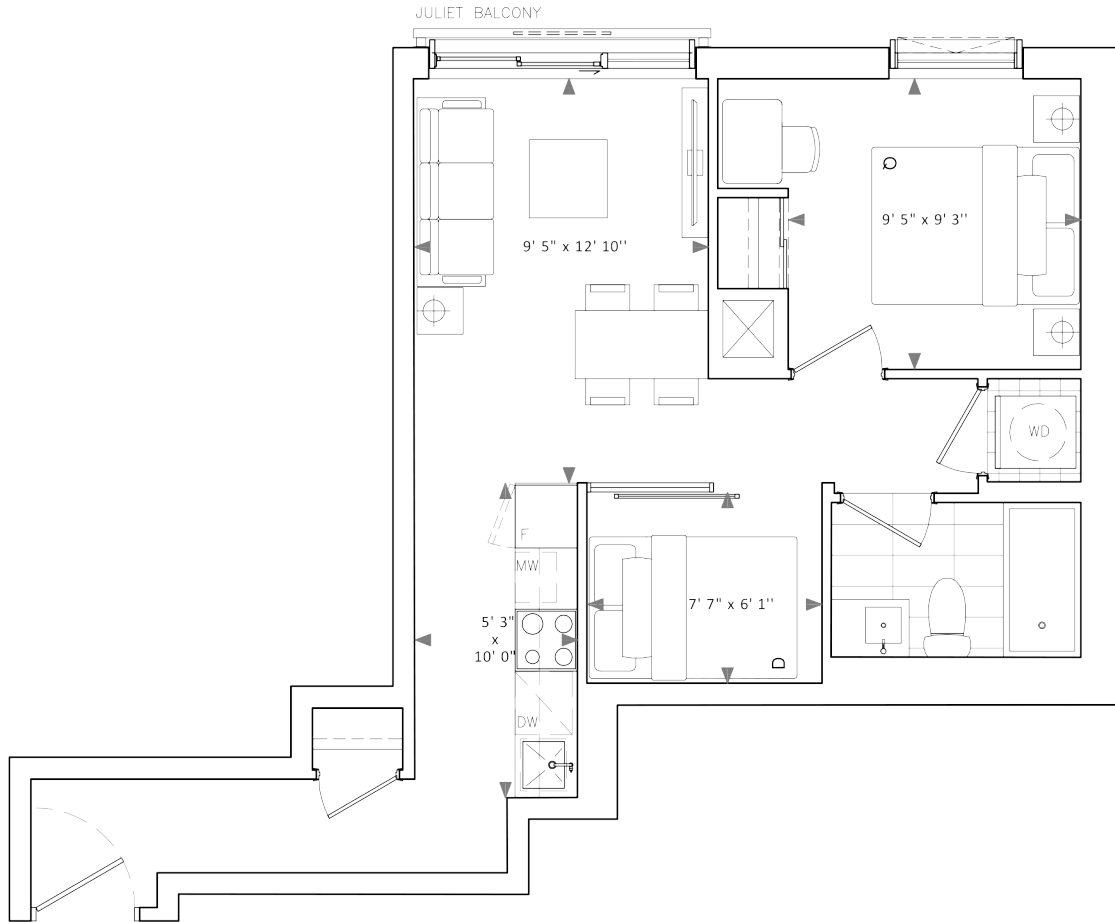
**Total: 531 Sq Ft**



Interior: 548 Sq Ft Exterior: 27 Sq Ft

Total: 575 Sq Ft





# THE TWELVE HUNDRED

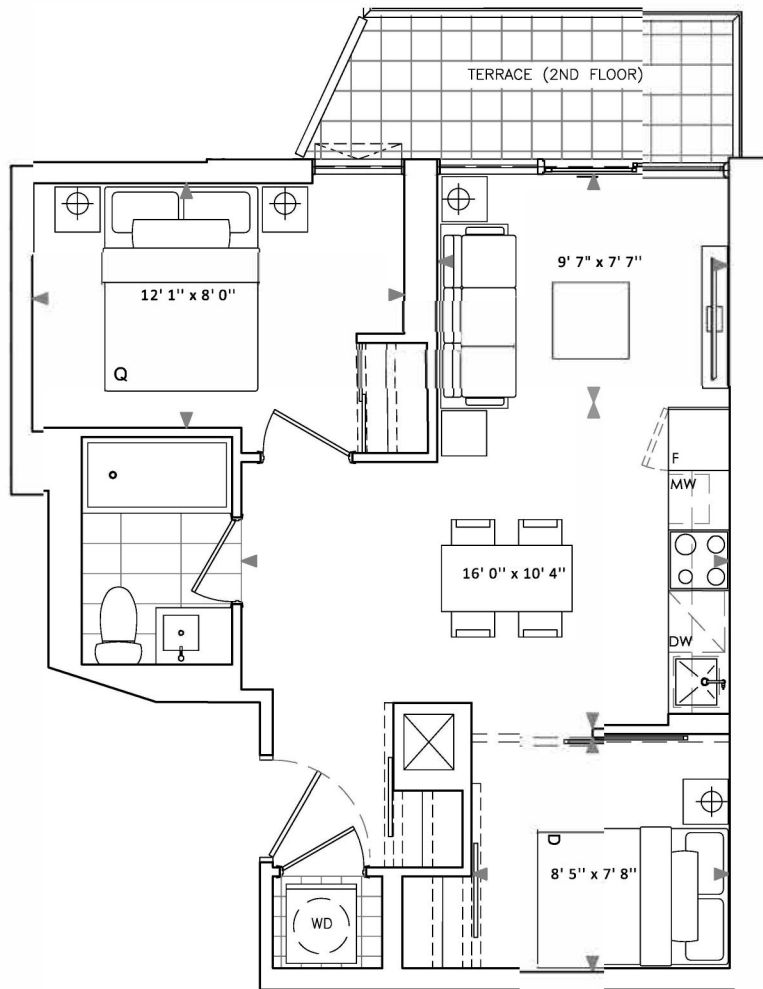
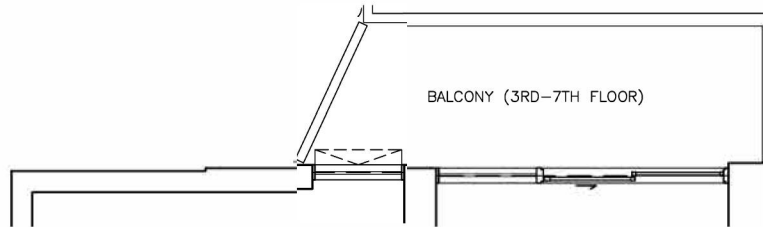
# E1

Interior: 577 Sq Ft    Exterior (terr.): 66 Sq Ft

**Total: 643 Sq Ft**

Exterior (balc.): 71 Sq Ft

**Total: 648 Sq Ft**



Fieldgate  
Urban

[TheTwelveHundred.com](http://TheTwelveHundred.com)

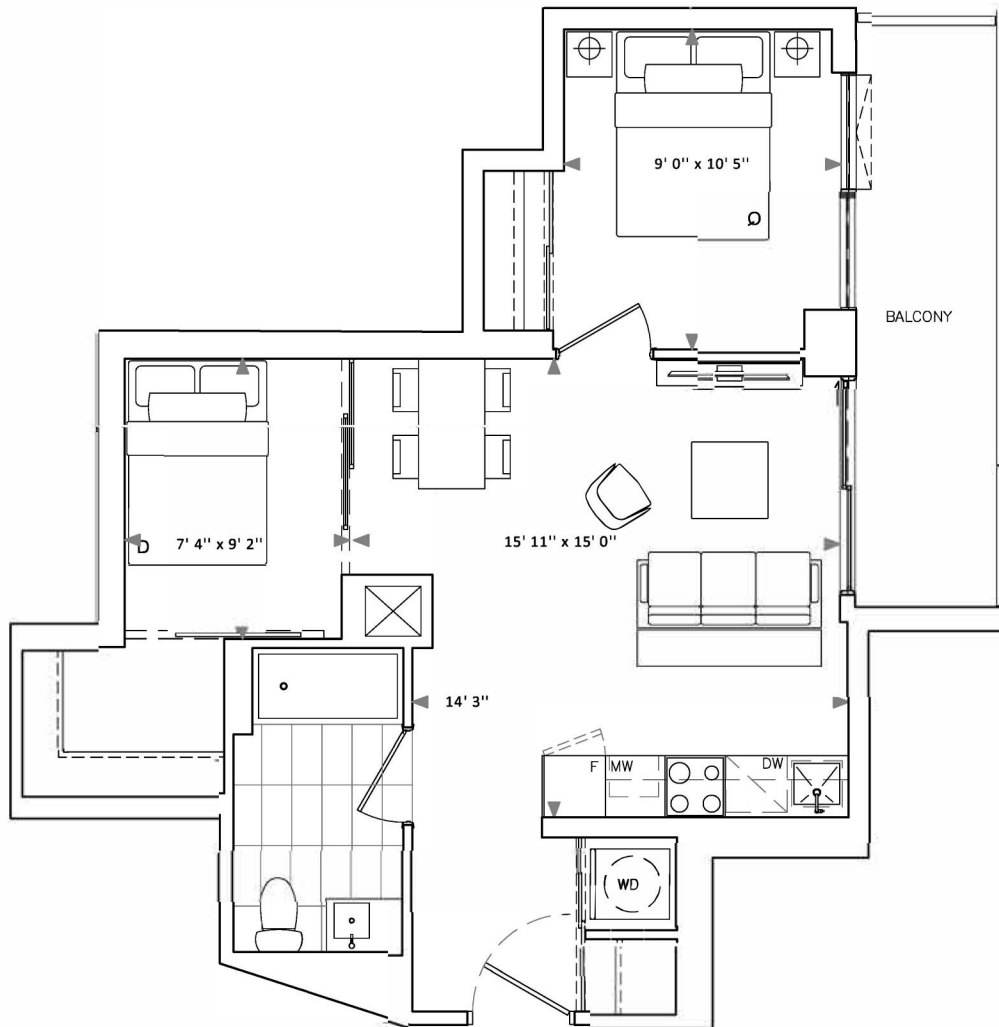
Dimensions, specifications, layouts and materials are approximate only and are subject to change without notice. Window sizes and locations may vary. Furniture is for illustration purposes only and does not necessarily reflect the electrical plan for the suite. Suites are sold unfurnished. Actual useable floor space within the unit may be different from stated floor areas or dimensions on this plan. For more information on the method used for calculating the floor area of any unit, please refer to Builder Bulletin No. 22 published by Tarion. Balcony and terrace area is approximate and not included in net suite area. The actual unit purchased may be a reverse layout to the plan shown. E.&O.E.

# THE TWELVE HUNDRED

# E2

Interior: 625 Sq Ft Exterior: 93 Sq Ft

**Total: 718 Sq Ft**



Fieldgate  
Urban

[TheTwelveHundred.com](http://TheTwelveHundred.com)

Dimensions, specifications, layouts and materials are approximate only and are subject to change without notice. Window sizes and locations may vary. Furniture is for illustration purposes only and does not necessarily reflect the electrical plan for the suite. Suites are sold unfurnished. Actual useable floor space within the unit may be different from stated floor areas or dimensions on this plan. For more information on the method used for calculating the floor area of any unit, please refer to Builder Bulletin No. 22 published by Tarion. Balcony and terrace area is approximate and not included in net suite area. The actual unit purchased may be a reverse layout to the plan shown. E.&O.E.

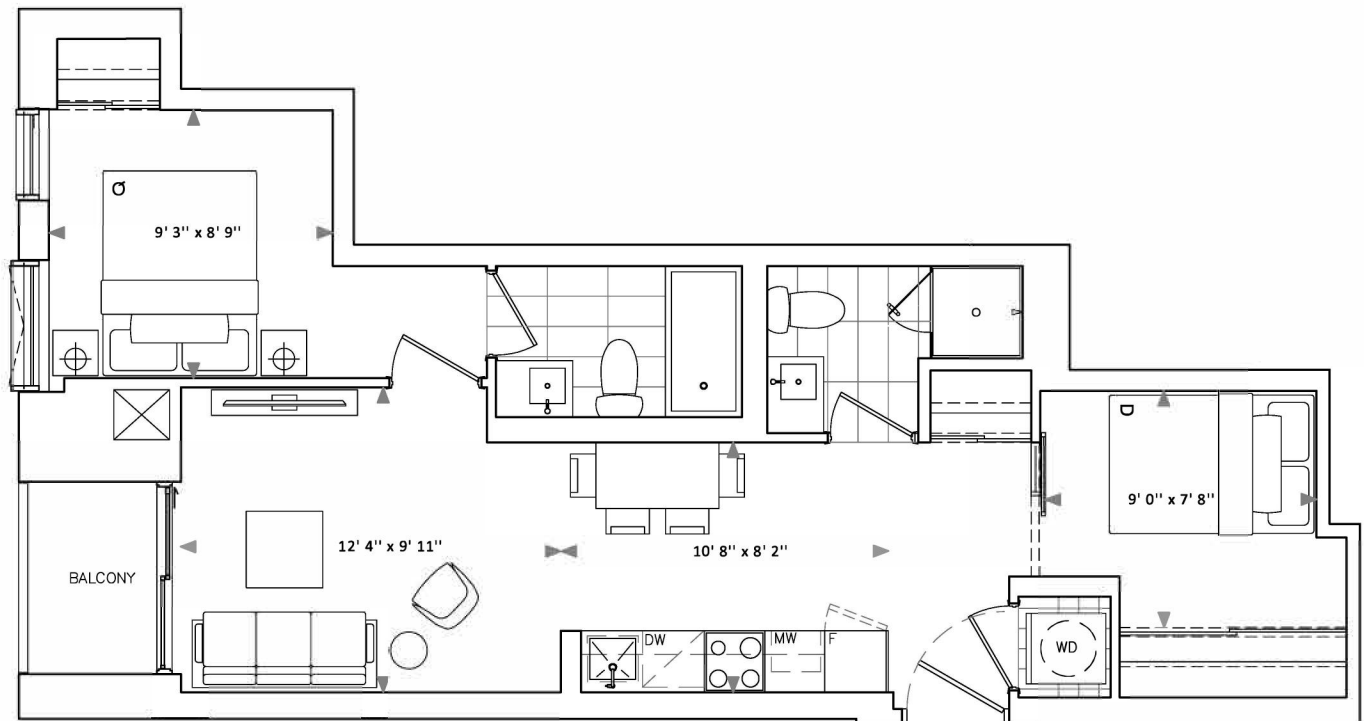


# THE TWELVE HUNDRED

# E6

Interior: 641 Sq Ft    Exterior: 28 Sq Ft

**Total: 669 Sq Ft**



Fieldgate  
Urban

[TheTwelveHundred.com](http://TheTwelveHundred.com)

Dimensions, specifications, layouts and materials are approximate only and are subject to change without notice. Window sizes and locations may vary. Furniture is for illustration purposes only and does not necessarily reflect the electrical plan for the suite. Suites are sold unfurnished. Actual useable floor space within the unit may be different from stated floor areas or dimensions on this plan. For more information on the method used for calculating the floor area of any unit, please refer to Builder Bulletin No. 22 published by Tarion. Balcony and terrace area is approximate and not included in net suite area. The actual unit purchased may be a reverse layout to the plan shown. E.&O.E.

Interior: 774 Sq Ft    Exterior: 24 Sq Ft

**Total: 798 Sq Ft**

