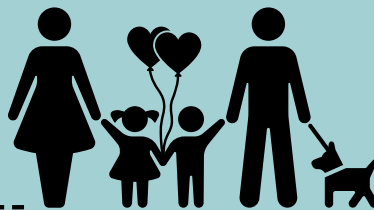
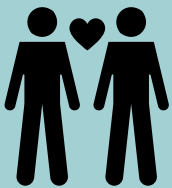


DANIELS ERIN MILLS

KINDRED

CONDOMINIUMS



Daniels
love where you live™

LIKE SISTERS
FINISH EACH OTHER'S
SENTENCES... THIS IS

KINDRED SPIRIT



MINN CROESO BIENVENIDO BAGRISUNG BONVENON
KALOS IRTHATE DOBRE DOSHLI VELKOMINNFÁILTE 'AHLAAN BIK
HUĀNYING KALOS IRTHATE CROESO SELAMAT DATANG DOBR
VITAMY SALUTATIO WELKOM BENVENUTA
ATE BIENVENU WELKOM DOBRODOŠLI WIT
WILLKOMMEN WELCOME RECEBER
NSVEIKI WELCOME VÍTEJTE

**MORE THAN JUST SPACE TO LIVE IN,
DISCOVER SPACES THAT INSPIRE LIVING.**

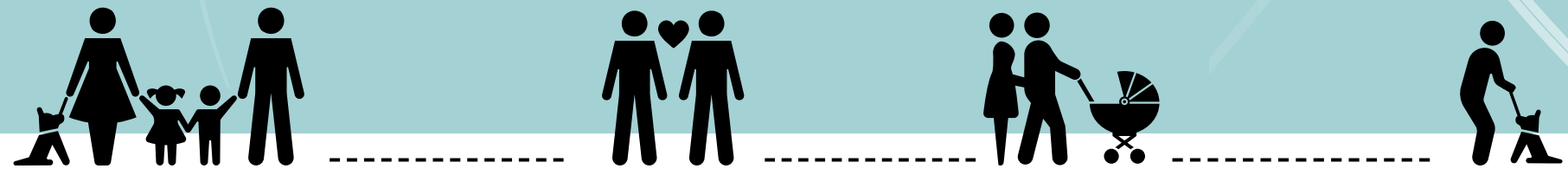
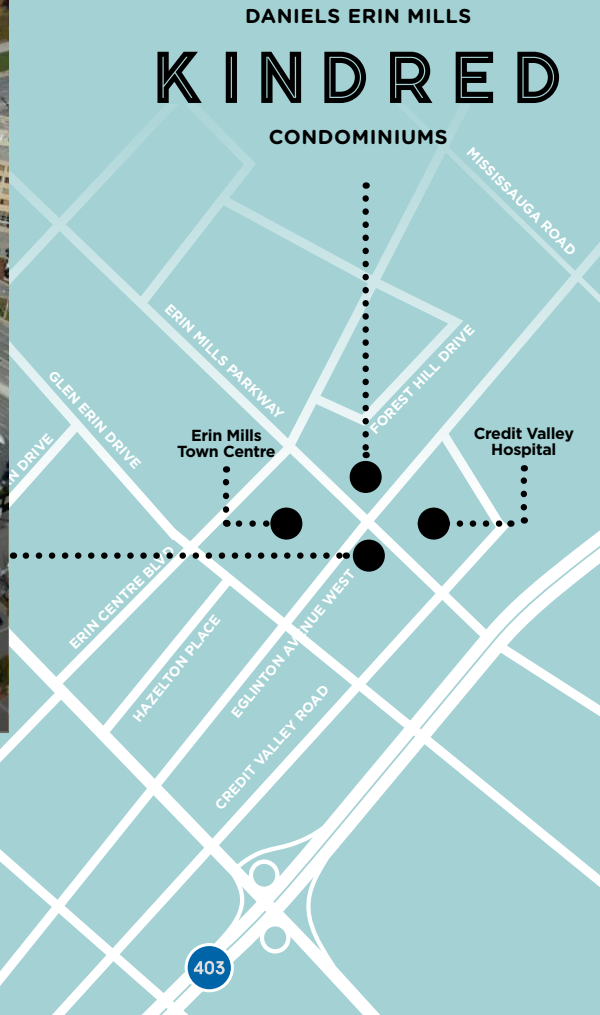
OUR ROOTS

are grounded in Erin Mills

In the late 1970's, The Daniels Corporation's Founder and Chairman Emeritus, Mr. John H. Daniels, was a moving force behind the 'new town' of Erin Mills. His vision for what was to come in the City of Mississauga was, and still is, extraordinary. Today, we are proud to continue to bring that vision to life.

Visionary and vibrant, the first chapter of the Daniels Erin Mills master-planned community was designed to ensure that people truly love where they live. More than just residential buildings, this exceptional lifestyle community includes retail, offices, and unique outdoor amenities that all residents can enjoy.

Daniels is thrilled to introduce the next chapter, as we expand this community with an exciting mix of condominium suites, a rental residence and premium seniors living opportunities at the north east corner of Eglinton Avenue West and Erin Mills Parkway.



Map is not to scale. E. & O. E.

COMMUNITY/kə'myoʊnədē/: noun *A group of people living in the same place.*

A literal definition, but we know it means way more than just that. It goes beyond a location, and far past the perimeters of a place. In fact it has no boundaries, no limits, and no single, solitary definition - because the essence of community is love. It's the love of people coming together to share creativity, self-expression, culture, identities, knowledge, passions and pursuits. It's family and friends, your neighbours and workmates. It's your friends at the knitting club, rock climbing wall, art gallery and favourite coffee shop. It's a feeling, a fellowship and a sense of belonging, contributing and connecting. It's a multi-faceted, colourful, flavourful oneness that elevates the human experience. All of this adds up to what community means and why **this is Kindred Spirit.**



There are places to play and come together where everyone looks out for one another.



Community celebrates the contribution of all generations.



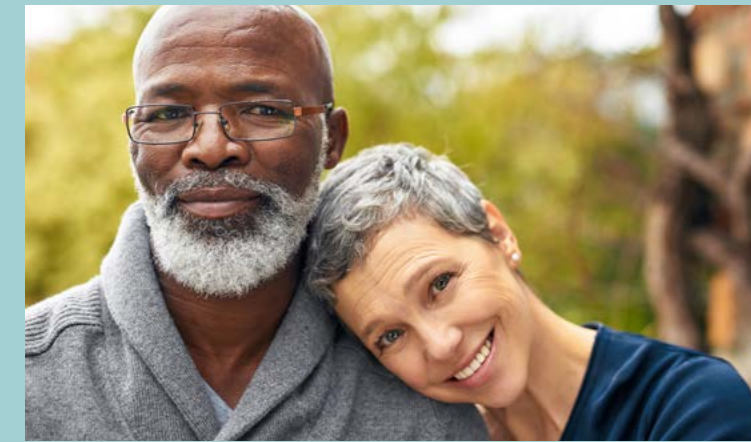
Sharing traditions and learning new ones makes this community so special.



Community means celebrating the love of all humankind...and animal kind!



Creating new beginnings, new friendships and finding the sense of family right where you live.



Community inspires learning, respect and helps us become better people.

ONE BIG HAPPY FAMILY

AT THE HEART OF KINDRED ARE PEOPLE - INDIVIDUALS
INSPIRED TO BE PART OF AN INCLUSIVE FAMILY.



Introducing Kindred, a vibrant new condominium that joins the master-planned, multi-generational Daniels Erin Mills community - celebrating people from all walks of life coming together.

Kindred Condominiums fits seamlessly within Daniels Erin Mills with its distinctive modern architecture, abundant outdoor space, lifestyle amenities, and Daniels' unparalleled quality craftsmanship. Kindred will rise **25-stor**es and offer a range of thoughtfully-designed suite layouts from **studio to two-bedroom plus dens** with contemporary style and chic finishes. Continuing to strengthen our commitment towards inclusivity, Kindred will also feature a selection of accessible suites for people with mobility needs through Daniels' Accessibility Designed Program (ADP).

Residents will appreciate an impressive offering of amenities that complement busy, active lives. Come home to a modern Lobby with a welcoming 24/7 Concierge, Pet Wash, Co-Working Zone, bookable Boardroom, Meeting Room, state-of-the-art Fitness Centre and more. Enjoy the stylish Party Room that includes a dining area, and a Lounge that opens onto an expansive Outdoor Terrace. Each space is uniquely fashioned to feel warm and welcoming with sleek, comfortable furnishings and elegant designer details.



Illustration is artist's concept. E. & O. E.

ONE-OF-A-KIND KINDRED LIVING



Daniels Erin Mills
Community,
South West Corner

Credit Valley
Hospital

EGLINTON
AVE W

DANIELS ERIN MILLS

KINDRED

CONDOMINIUMS

Erin Mills
Town Centre



SITE PLAN



Kindred is accompanied by two great residential opportunities that will add to this master-planned and multi-generational community. The next chapter of this great community continues on the north east corner of Eglinton Ave. W. and Erin Mills Pkwy with a brand new purpose-built rental residence and a premium seniors' residence.



Arrive in style with a private and convenient roundabout driveway entrance. Lush landscaping and beautiful walkways surround the modern architectural design, connecting your comings and goings with ease.



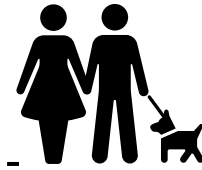
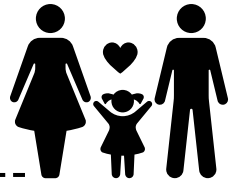
CHARGING INTO THE FUTURE

With Kindred residents and the environment top of mind, you can rest assured we've got you and your Electric Vehicle (EV) covered with our EV charging offering.

OUTDOOR OASIS

Experience an exclusive enclave of nature on a beautifully landscaped patio that offers the perfect place to come together, just steps from your front door. Enjoy views of the community garden, get your workout in at an outdoor calisthenic area, relax fireside with friends and neighbours while the kids enjoy their adventures on the playground.





There's a certain feeling when you walk into a room that invites you in and makes you feel like you belong. Embrace the love of the resident-exclusive amenities at Kindred that are uniquely fashioned and welcoming spaces, thoughtfully-designed to inspire and complement your busy and active life.

The Kin Club presents engaging spaces that bring people together. From a stylish Lobby, Co-Working Zone, Bookable Boardroom, Meeting Room and Lounge to the Fitness Centre, Games Room, Party Room and ultimate al fresco dining hotspot on the Outdoor Terrace.

THE
KIN
CLUB



LIVING THE LIFESTYLE

Local Art Program

FOR THE LOVE OF LOCAL

Celebrating community also extends to taking a procurement approach that supports every talent and economic welfare within our local community. Daniels uses our purchasing power for social benefit by sourcing locally, from diverse suppliers and enterprises, supporting every community in which we build. The amenity spaces at Kindred will be rich with art sourced or commissioned from local emerging and established artists creating a curated collection around every corner.

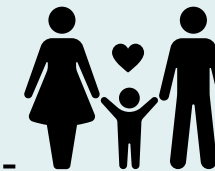
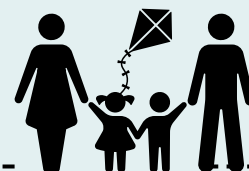




Get in on the ground floor with convenient amenities for you and your family.

1ST FLOOR AMENITIES

- | | |
|-----------------------|------------------|
| 1. Co-Working Zone | 7. Lobby |
| 2. Yoga Studio | 8. Mail Room |
| 3. Universal Washroom | 9. Main Entrance |
| 4. Fitness Centre | 10. Parcel Room |
| 5. 24/7 Concierge | 11. Pet Wash |
| 6. Elevator Lobby | |





LOBBY

Come home to a warm welcome when you arrive in the modern, artful Lobby with wood accents, designed to inspire and impress with style and comfort. Say hello to your friendly 24/7 Concierge, pick up packages in the secure parcel room, and the Pet Wash is right around the corner for when your four-legged friend needs some pampering.

CO-WORKING ZONE

Great minds think alike, and a great space can inspire collaboration, new ideas, and make hard work just a little easier. Conveniently located right off the Lobby, stay connected, productive and work through your to-do list in a bright and sleek space with areas to meet, share and brainstorm. If you need some quiet time for a Zoom call, you can head to our bookable Meeting Room.



FITNESS CENTRE

Motivation and mindfulness are just steps away in the state-of-the-art Fitness Centre and Yoga Studio. Find your flow, sweat it out, and rise to the occasion of feeling your best.

PARTY ROOM

There's always a reason to celebrate! Watch your favourite team on the big screen in the comfy lounge seating, pour a refreshing beverage at the bar, or enjoy the catering kitchen and dining area with great food, family and friends in the bookable Party Room.



2ND FLOOR AMENITIES

- 1. Bookable Party Room
- 2. Bar and Catering Kitchen
- 3. Universal Washroom
- 4. Bookable Meeting Room
- 5. Property Management Office

Illustrations are artist's concept. E. & O. E.





The 8th floor amenities provide a seamless flow between the great outdoors and beautiful indoor spaces to relax, play and socialize.

8TH FLOOR AMENITIES

1. Bookable Lounge
2. Lounge
3. Games Room
4. Outdoor Terrace and Barbecue Area
5. Bookable Terrace and Barbecue Area
6. Universal Washroom

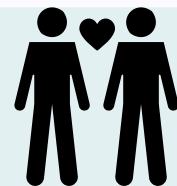


Illustration is artist's concept. E. & O. E.



BOOKABLE LOUNGE

Reserve the Lounge to host a private event and extend the gathering onto the connecting Outdoor Terrace. The big screen TV and comfortable seating area provide the opportunity to gather and catch that favourite season finale.



GAMES ROOM

Let the games begin! Whether a champion or cheerleader, share a friendly competition in a space full of spirit. Enjoy a round of pool or set up your favourite board game around the comfy seating areas. Refuel during intermission at the servery counter with snacks and refreshments, or head outside to the adjoining Outdoor Terrace for a breath of fresh air.

THE
KIN
CLUB on 8



OUTDOOR TERRACE

Fresh, friendly and full of fun, this social sanctuary has it all. A modern outdoor oasis designed with lots of comfortable lounge seating and dining spaces, hangout with friends by the stone fire table, grill on the barbecues and host an al fresco feast under the stars.



Quality, contemporary and comfortable

Experience thoughtful and spacious layouts created with designer features and finishes that complement your needs and real life. From generous 9 ft. ceiling heights and stylish flooring options including porcelain tiles in the bathrooms and modern laminate throughout to custom-designed kitchen cabinetry, quartz countertops and sleek stainless-steel appliances - every touchpoint welcomes you home.



Illustration is artist's concept. E. & O. E.

THE SUITE LIFE





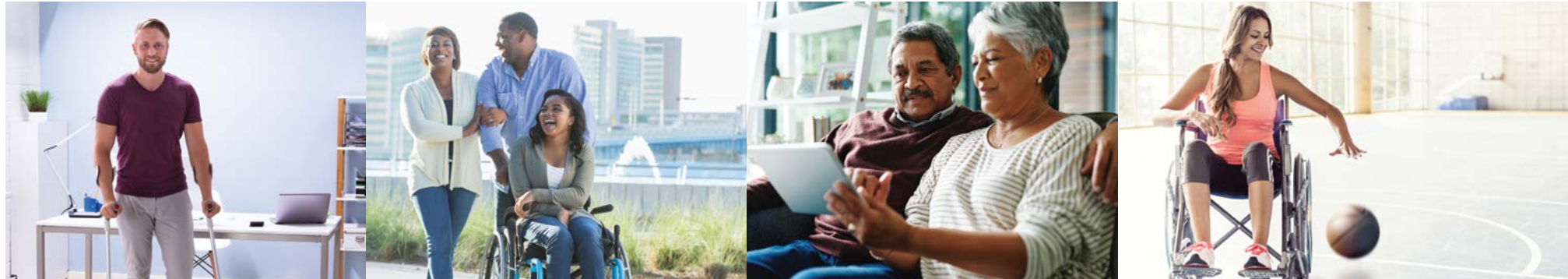
Illustration is artist's concept. E. & O. E.



DANIELS ERIN MILLS

KINDRED

CONDOMINIUMS



DESIGNING POSSIBILITIES. REMOVING BARRIERS.

With the expansion of Daniels' Accessibility Designed Program,

Kindred will continue to strengthen the commitment toward inclusivity. Dedicated to providing a higher standard in accessibly designed homes for people using mobility devices, Daniels ensures that the suites offered through its Accessibility Designed Program (ADP) exceed the accessibility standards set by the Ontario Building Code (OBC).

Recognizing mobility needs vary among individuals, Kindred is offering a series of standard accessible layouts to choose from at no additional cost. These standard layouts include accessible features such as roll-in showers and roll-out balconies. Homebuyers can consult with Daniels to further modify their suites to meet their specific accessibility needs.

Daniels is committed to the ongoing development of homeowner programs with a goal to eliminate accessibility barriers.

Accessibility Designed Program details

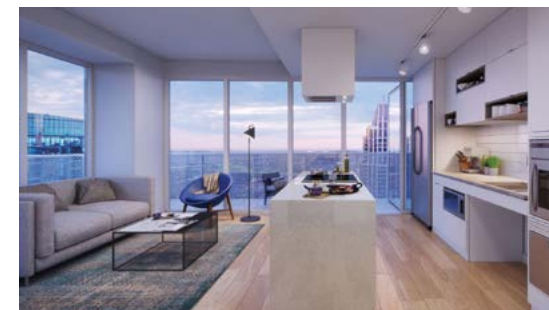
At Kindred, homebuyers can choose from a selection of one bedroom and two bedroom ADP suite designs.

ADP suite overview:

- Power door operator (PDO) at suite entry door
- All doors within the suite will offer a minimum 865mm clearance (34")
- Roll-out low threshold balcony and suite entry access
- Minimum 1100mm clearance between island and kitchen
- Accessible bathroom will provide the following features:
 - Roll-in, tiled shower
 - Grab bars in shower
 - Handheld shower head
 - Under sink knee clearance
 - Minimum 900mm x 1500mm clear transfer space beside toilet
 - Minimum 1500mm turning radius



Roll-in shower example



Roll-out Balcony and Modified Kitchen example

ADP Features

The standard design features will include:

- 1 Roll-in shower** While barrier-free washrooms under OBC require a larger turning radius, they do not require any other barrier-free features. Barrier-free washrooms often have bathtubs, and therefore do not meet the needs of mobility device users.
- 2 Handheld shower head** Flexible, handheld shower heads greatly improve the functionality of the shower and will be provided in all roll-in showers.
- 3 Roll-out balcony with swing door** Balconies are typically accessed by a sliding door with a threshold high enough to make access difficult. Moreover, balcony doors are often too narrow to accommodate a mobility device.
- 4 Power operated suite entry door** Power door operated suite entry doors and a low threshold will greatly improve the functionality of the suite.
- 5 Wider doors throughout** Under the OBC, at least one bedroom door and one bathroom door are required to have a clear opening of at least 865mm (34") in barrier-free suites. ADP suites will provide at least 865mm clearance on all bedroom doors and the accessible bathroom door.
- 6 Additional clearance in bathroom** The OBC requires a 1500mm turning radius in bathrooms, but the accessible bathroom will have additional clearances, including 900mm x 1500mm transfer space beside the toilet and shower, and knee clearance underneath the sink.

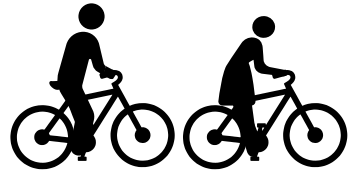
Accessibility Commitment

Daniels is committed to providing services to its customers, including customers with a disability, in accordance with the requirements of the Accessibility for Ontarians with Disabilities Act (AODA).

For more information about Daniels' Kindred Accessibility Designed Program, please speak with a Sales Representative.

*Due to construction timelines, the opportunity to incorporate Modified Kitchen features is time sensitive. Layout and finishes may vary from those shown. Not all suites are included in the Accessibility Designed Program. Speak to a sales representative for details. All brand names, logos, images, text, and graphics are the copyright of the owners, The Daniels Corporation. Reproduction in any form, without prior written permission from The Daniels Corporation, is strictly prohibited. Illustrations are artist's concept. E. & O. E.

Welcome to the Neighbourhood



Credit Valley Hospital



Erindale Park



Culham Trail



Riverwood Conservancy

LIFE IN THE HEART OF ERIN MILLS



Ratray Marsh Conservation Area



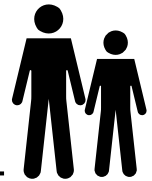
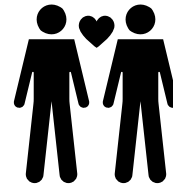
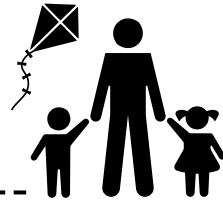
Take a moment to think about all the lifestyle qualities and attributes of an ideal place to call home. A location abundant in lush nature, beautiful parks, trails and places to play. A thriving urban centre with world-class amenities and choice conveniently close by. A culturally rich, family-friendly community with great schools, recreational facilities, arts and sense of place with purpose. With the addition of the Erin Mills Farmers' Market, local vendors and the community are brought together. Wrap it up in the charm of small town living with big city perks and you've defined life in Erin Mills.

Almost too good to be true, except life in Erin Mills is all this and more, in part because it was thoughtfully planned and created with aspirational living and community values already at the core. It's also in part to the wonderful people that already call this home and help foster this unique lifestyle.

As an energetic and evolving community, Erin Mills offers one of the finest suburban lifestyles in the GTA. Its central location within Mississauga connects residents to vibrant and nearby amenities, all while living in a beautiful and natural setting with welcoming neighbourhoods. Neighbours become friends, friends become family, and togetherness is at the heart of the community.



A Number of Reasons you'll Love where you live.



2 MINUTE WALK
to Erin Mills Town Centre

2 MINUTE WALK
to Credit Valley Hospital

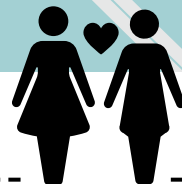
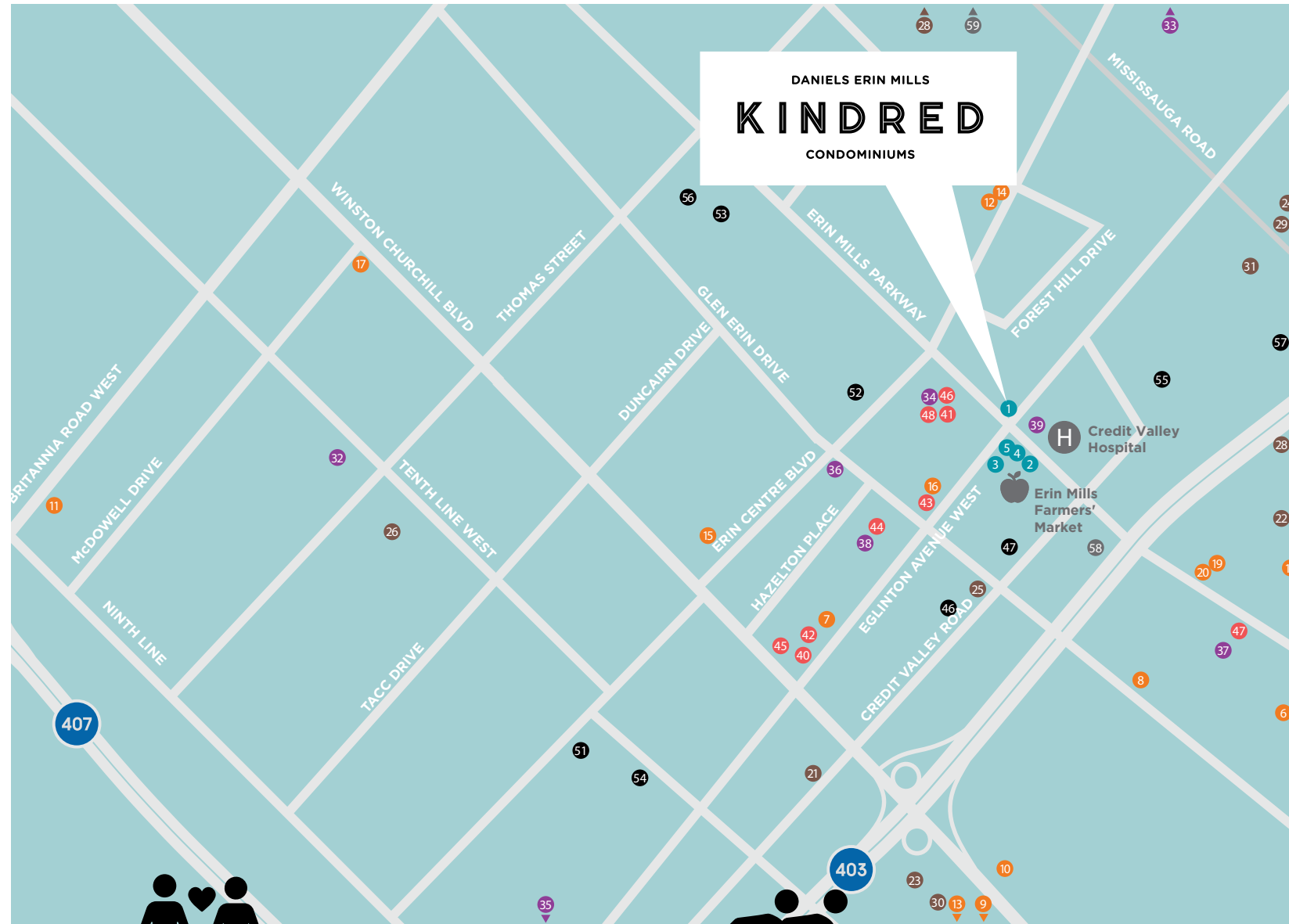


4 MINUTE DRIVE
to Hwy 403

5 MINUTE DRIVE
to Streetsville GO Station

6 MINUTE DRIVE
to Sawmill Valley Trail

7 MINUTE DRIVE
to Cineplex Cinemas



DANIELS ERIN MILLS

- 1 Kindred Condominiums
- 2 Daniels Parc Towns
- 3 Skyrise Rentals
- 4 Arc Condominiums
- 5 West Tower

FOOD & DINING

- 6 Al Monsaba
- 7 Axia Restaurant
- 8 Brasas Churrasqueira Rotisserie & Grill
- 9 Browns Socialhouse Erin Mills
- 10 Hakka Spice
- 11 J.P.'s Pizzeria
- 12 Karioka Fine Egyptian Cuisine & French Cafe
- 13 Mandarin Restaurant
- 14 Mona Fine Foods
- 15 The Kakori
- 16 Tim Hortons
- 17 Ritz Thali - Best Indian Food Takeaway In Mississauga
- 18 Rogues
- 19 Silverspoon Erin Mills
- 20 South N' Spicy

PARKS & TRAILS

- 21 Erin Centre Trail Park
- 22 Erindale Park
- 23 Erin Mills Twin Arena
- 24 Hewick Meadows
- 25 John C. Pallett Park
- 26 O'Connor Park
- 27 Sawmill Valley Trail
- 28 Streetsville Memorial Park
- 29 The Riverwood Conservancy
- 30 Tom Chater Memorial Park
- 31 Woodland Chase Trail

LIFESTYLE & OTHER

- 32 Anytime Fitness
- 33 Cineplex Cinemas
- 34 CoYoga
- 35 CrossFit Crosscheck
- 36 Erin Meadows Community Centre
- 37 Erin Mills Tennis Club
- 38 GoodLife Fitness
- 39 LifeLabs Medical Laboratory Services

SHOPPING

- 40 The Beer Store
- 41 Erin Mills Town Centre
- 42 Global Pet Foods
- 43 LCBO
- 44 Loblaws
- 45 Nations Fresh Foods
- 46 Shoppers Drug Mart
- 47 South Common Centre
- 48 Walmart Supercentre

SCHOOLS

- 49 Blessed Trinity Catholic Education Centre
- 50 Credit Valley Public School
- 51 Erin Centre Middle School
- 52 John Fraser Secondary School
- 53 Middlebury Public School
- 54 Oscar Peterson Public School
- 55 St. Rose of Lima Separate School
- 56 Thomas Street Middle School
- 57 University of Toronto - Mississauga

TRANSIT

- 58 Erin Mills GO Station
- 59 Streetsville GO Station

Connectivity

**RIGHT
IN THE MIDDLE
OF ALL THE
ACTION**

IN ERIN MILLS



Consider yourself connected to the core of convenience with an ideal location that supports everything you need to live a full life. Surrounded by a wealth of nature as well as urban amenities right where you live, you're also just a short bus ride to Mississauga's City Centre for even more urban choices.

Erin Mills is also a smart choice when it comes to schools with several well-known public schools and the beautiful campus for the University of Toronto Mississauga. It is also home to one of Mississauga's largest hospitals - Trillium Health Partners and the highly accredited Credit Valley Hospital.



**PLUS, IT'S SUPER
COMMUTER FRIENDLY!**

Where do you want to go? In town travel is a breeze via the local MiWay transit service offering a dedicated bus corridor with 12 stations running from east to west across the city. Hop on at Erin Mills Station and you are on your way. Erin Mills is also serviced by the Erin Mills GO Bus Station, Oakville Transit and the Clarkson GO Train Station for easy commuting east into Toronto and west into Oakville, Burlington and Hamilton.

Commuters and those wanting to visit Toronto can enjoy instant access to highway 403 connecting residents to Hwy 401, 410, 407 and 427 south to the QEW, providing easy access to the GTA and beyond. Prefer to enjoy the scenery? The closest GO Train Station is only 10 minutes away at the Erindale GO Station connecting at Union Station in less than 40 minutes.



Mississauga City Centre Transit Terminal



Travel times are approximate and may vary. E. & O. E.



Play Every Day

CONNECT IN THE GREAT OUTDOORS

Hit the dirt, lay in the grass, run like the wind, make a splash, join in the fun and become one with Mother Nature. Green is the new scene and with over 500 parks to explore in Mississauga there are no shortages of places to play. From playgrounds, picnic spots and sports fields, to trails, toboggan hills and a lakeside day on the beach - it's all here just waiting for you to explore.



Let's play O'Connor Park

Score the perfect place to picnic and play on almost seven hectares of parkland consisting of a natural wetland, spacious picnic areas, two soccer fields, modern playground and connecting walkway.

Fields of dreams Tom Chater Memorial Park

Pick a field and let the games begin! This sizable park features three baseball diamonds, a soccer field, and lawn bowling/bocce ball green. Add a playground and spray park, picnic facilities and a trail route through a friendly forest.



Everything epic Erindale Park

Discover something for everyone in a 222 hectare park that celebrates year-round outdoor activities. A famous spot for family picnics, there are five designated areas for groups ranging from 60 to 500 people, with barbecues and a water source. Kids will love the playground and toboggan hills, while hikers, joggers, cyclists, and cross-country skiers can explore a variety of trails such as the Culham Trail Loop and popular UTM Nature Trail through forests, ravines and along the river. A bird watchers haven, a hot spot for fishing and beautiful background for wedding photos and nature lovers alike.

Gone fishing Lake Aquitaine Park

Imagine a man-made lake in your own backyard! This popular fishing spot boasts a natural habitat for rainbow trout, sunfish, largemouth bass and perch. There are also extensive trails ideal for walking, cycling, inline skating and cross-country skiing during the winter.



Flower power The Riverwood Conservancy

Made for nature lovers, this 150 hectare nature preserve on the Credit River invites the community to explore diverse trails to experience plants and flowers in themed gardens as well as learn about conservation.

Lakeside leisure Jack Darling Memorial Park

Located by Lake Ontario this scenic park features a long stretch of sandy beaches, natural waterfront areas and recreational parkland. With plenty of open space to play in, families can also enjoy two spacious picnic areas, playgrounds, a splash pad and tennis courts. Explore both pedestrian and bike paths, follow a footpath to Rattray Marsh, a wetland reserve, along with waterfront trails and spots to launch windsurfers, canoes or kayaks. There's also one of the largest fenced in dog parks too.





NEED IT, WANT IT, GOT TO HAVE IT! HERE IN ERIN MILLS YOU'LL FIND A MECCA OF MALLS, A BOUNTY OF BIG BOX STORES AND LOCAL FAVES AT YOUR FINGERTIPS FOR DAILY ESSENTIALS.

The Erin Mills Town Centre is a community hub and top shopping destination with over 185 shops and restaurants including popular anchor stores like Walmart, Hudson's Bay, HomeSense, Indigo, and Old Navy. Another nearby stop packed with shops is the South Common Centre with 52 stores, eateries and services.



Erin Mills Town Centre



AN EPIC CENTRE OF SHOPPING



If you're looking for a larger shopping experience, a short drive lands you at Square One Shopping Centre, with 360 stores including premiere fashion brands such as Zara, Michael Kors and Harry Rosen. More you say? Head to Heartland Town Centre, one of Canada's largest outdoor malls with over 180 stores including Marshalls, Best Buy, Future Shop and Canadian Tire. Still not tired out? Then check out the Toronto Premium Outlets in Halton Hills inviting 85 stores with top tier fashion brands. And, when it's time to go really big there's a Costco, The Home Depot and all sorts of other big box stores just minutes away!



Restaurants

TASTES OF THE WORLD

In Erin Mills, culture and culinary delights go hand in hand. Explore an international variety of globally inspired cuisine all in your very own neighbourhood. Just remember to pack lightly and bring a big appetite.

Restaurants & Culture

Shawarma Royale
Lebanese

Al Monasaba
Yemeni

Sahtain
Middle Eastern

Ritz Thali
Indian

The Kakori
Indian

South & Spicy
Indian

Silverspoon
Halal Pakistani/
South Asian

Mac's Sushi
Japanese

Sehmi
Japanese

Axia
Korean & Southeast
Asian kitchens

Hakka Spice
Indo-chinese

Mandarin
Chinese

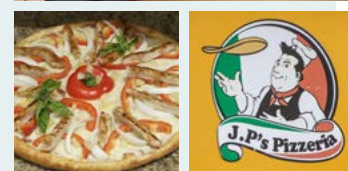
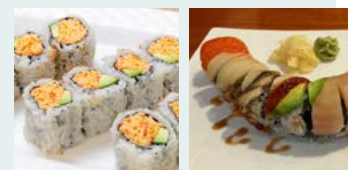
Rogues
Italian

J.P.'s Pizzeria
Italian

**Brasas Churrasqueira
Rotisserie & Grill**
Portugese

**Gladiator Burger
& Steak**
Canadian

Browns Socialhouse
Global



FOR SOCIAL GOOD & REALLY GOOD COFFEE

Visit Studio 89, a non-profit fair-trade café providing accessible programming that supports humans, animals, and the planet, plus serves the best coffee and ethical treats - right in the Daniels Erin Mills community.

studio89.org



Local lovers of the arts



INSPIRED BY CULTURE. EMBRACED BY COMMUNITY

Erin Mills is a blend of culture. Rich in heritage, diverse in traditions, and always evolving in its expressions and celebration of the arts. Here you will discover a vibrant hub for art, music, and theatre with a wide range of choice that caters to everyone's tastes.

In fact, Mississauga is so committed to the enrichment of culture, the city is embarking on a newly approved Culture Master Plan that will create six uniquely themed cultural districts. The plan brings together the entrepreneurial spirit of business with

creative passion of the arts culminating in vibrant destinations offering new entertainment venues, art galleries and green spaces for locals and visitors to celebrate culture in.

This plan brings such promise to an already flourishing scene that invites wonderful experiences that share creativity, expand your awareness, and inspire original expression. From the classical to comedic, on stage, on the walls or in the square - here's where your community comes together to celebrate the arts.

ENTERTAIN ALL THE POSSIBILITIES



Celebration Square

It's hip at the square! Everyone heads down for free concerts and events like movie nights, farmers' markets, vintage car shows and festivals. There's a big stage with jumbotrons, nice grass to lay on and a fountain with water jets that turns into a skating rink during winter months.



Bradley Museum

It's like stepping back in history. The kids love exploring the two-acre site, checking out the heritage buildings, barn, and log cabin. There's costumed tours and seasonal events like Maple Magic and Fall fairs, plus accessible nature trails to the waterfront and Rattray Marsh where you can try and spot the great Blue Heron!



Living Arts Centre

Enjoy date night with something new to experience every month. This centre is huge with over 225,000 square feet of multiple performance venues. You'll love the symphony and choral shows, as well as a diverse selection of theatrical productions. There's also an evolving exhibition gallery along with seven art studios always offering up something new.



Art Gallery of Mississauga

Mississauga has so many art galleries and diverse shows, it'll be hard to choose a favourite. The Blackwood Gallery curates magnificent contemporary exhibitions and the Art Gallery of Mississauga showcases a rotating calendar of regional, national and international artists.



Meadowvale Theatre

From music, dance, comedy and local theatre, Meadowvale Theatre has it all. The level of talent is amazing, and the setting is intimate with just 395 seats so you really feel a part of the show.



Daniels

love where you live™



CF TORONTO EATON CENTRE
TORONTO



DANIELS FIRSTHOME™ COMMUNITIES
THROUGHOUT THE GTA

OVER 37 YEARS

& building strong

THE DANIELS CORPORATION BUILDS WITH A PASSION FOR CREATING VIBRANT COMMUNITIES IN EVERY SENSE OF THE WORD. DANIELS LOOKS BEYOND THE BRICKS AND MORTAR, INCLUDING SOCIAL, CULTURAL AND ECONOMIC INFRASTRUCTURES THAT WILL CREATE A UNIQUE SENSE OF PLACE.

Daniels has built more than 35,000 award-winning homes and apartments, within master-planned, mixed-use communities, commercial and retail spaces, and has earned its standing as one of Canada's largest and pre-eminent builders/developers. Company founder and Chairman Emeritus, John H. Daniels is a towering figure of the North American real estate industry. In a career that has spanned over 60 years, the former CEO of Cadillac Fairview Development Corporation has left an indelible mark on the quality of the places in which people live, work, play, create and shop.

ARC DANIELS ERIN MILLS
ERIN MILLS



DANIELS CITY CENTRE COMMUNITY
MISSISSAUGA



Led by company President and CEO Mitchell Cohen and a creative team of visionary professionals, The Daniels Corporation's integration of residential and commercial divisions results in a stable turnkey operation, which earns the company a high level of industry and public trust. Daniels plans, designs, develops, builds and manages all residential and commercial properties in-house, enabling the ultimate in quality control and streamlined service. In essence, Daniels is an all-inclusive service provider - a company dedicated to seeing each project through to construction completion and beyond.

CONDOMINIUMS AT SQUARE ONE DISTRICT
MISSISSAUGA



BUILDING for everyone



HIGH PARK CONDOMINIUMS
TORONTO

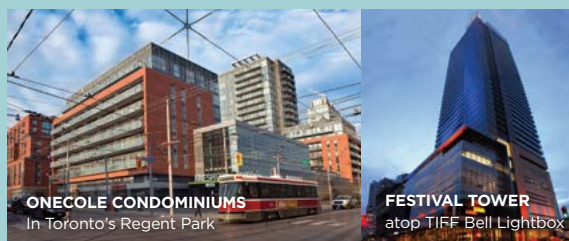
Weaving Arts & Culture Into the Community Fabric

Daniels has consistently demonstrated the value of embedding arts and culture into the fabric of new communities. In Regent Park, Daniels partnered with Artscape, Toronto Community Housing and members of the local community to create Daniels Spectrum – a 60,000 square-foot cultural hub. Setting Daniels apart even further, the company has established an art procurement program that identifies and purchases art from local and emerging artists for residential and commercial lobbies and amenity spaces, thus contributing enormously to the area’s economic development.

Sustainability

Long before “green” became an industry buzzword, The Daniels Corporation took a proactive approach to protecting the environment through innovation in its construction techniques. Daniels continues to build for efficiency and environmental sustainability through standards beyond the Ontario Building Code, and in some cases, to LEED Gold certification. Within the Canadian building industry, Daniels is also leading the urban food revolution through trailblazing urban agriculture initiatives that incorporate farmers’ markets and urban allotment gardens into its residential communities.

Dedicated to upholding a “people-first” philosophy, Daniels has long been a champion of affordable rental and ownership housing, and has built 3,600 affordable rental-housing units under several government programs. Daniels was the first developer to offer purpose-built rental housing in the Greater Toronto Area in 25 years through its Gateway Rental portfolio. In partnership with Sun Life, Daniels has built a market rental building as part of its Daniels Erin Mills community in Mississauga and Toronto’s Regent Park. Daniels FirstHome™ communities across the GTA provide quality-built residences priced within the reach of first-time buyers, and at selected communities, Daniels is also partnering with Amica Seniors Lifestyles, Chartwell Retirement Residences and WellTower to deliver a continuum of housing options for older adults across the GTA, as well as building a new student residence in partnership with the University of Toronto. On the commercial end of the spectrum, Daniels creates outstanding business opportunities for national brand companies as well as grassroots not-for-profit organizations. Over the past 37 years, Daniels has embraced financial and hands-on generosity toward a number of charities and non-profit organizations, including Second Harvest, Habitat for Humanity, and Covenant House Toronto.



ONECOLE CONDOMINIUMS
In Toronto's Regent Park

FESTIVAL TOWER
atop TIFF Bell Lightbox



NY2 CONDOMINIUMS
TORONTO



DANIELS WATERFRONT - CITY OF THE ARTS
TORONTO

NY TOWERS COMMUNITY
TORONTO

DANIELS SPECTRUM
TORONTO

INNOVATION in master-planning

Daniels transforms underutilized land into sought-after master-planned communities that include residential, name-brand retail and commercial opportunities. Daniels’ land-use planning is based on the principle of integration into the existing urban fabric, creating neighbourhoods that fit seamlessly into their surroundings, providing a broad customer base of homebuyers, retailers and commercial businesses. For example, Daniels is partnering with Toronto Community Housing to revitalize 53 of the 69-acre Regent Park community in Toronto’s Downtown East, which is being looked at around the world as the gold standard by which challenged urban neighbourhoods can be re-imagined as healthy, sustainable communities. Daniels also partnered with renowned filmmaker Ivan Reitman to build TIFF Bell Lightbox,

an international destination for the world of film. In addition to the iconic home of the Toronto International Film Festival, this mixed-use development includes restaurants, ground floor retail, a commercial parking garage and the 44-storey Festival Tower Residence. Daniels Waterfront – City of the Arts community in Toronto’s East Bayfront has become a destination for arts, culture, and creativity and includes residential, office, retail, academic, arts and cultural spaces. Daniels has also created iconic neighbourhoods throughout the GTA, providing residential, retail and commercial services within their NY Towers and HighPark Condominium communities in Toronto, as well as Daniels City Centre and Daniels Erin Mills communities in Mississauga.

AWARDS



FOUR-TIME
WINNER OF THE TARION
HIGH-RISE BUILDER OF
THE YEAR AWARD



HOME
BUILDER OF
THE YEAR
AWARD



COMMUNITY OF
THE YEAR
AWARD (BILD)



GREEN DESIGN
AWARD



COMMUNITY OF
THE YEAR -
URBAN AWARD

KINDRED
A PLACE THAT CONNECTS
ITS COMMUNITY.

DANIELS ERIN MILLS

KINDRED

CONDOMINIUMS

DanielsKindred.com

Daniels
love where you live™